



Datasheet for ABIN516995
anti-IL-1 beta antibody (AA 1-269)



[Go to Product page](#)

3 Images

1 Publication

Overview

Quantity:	100 µg
Target:	IL-1 beta (IL1B)
Binding Specificity:	AA 1-269
Reactivity:	Human
Host:	Rabbit
Clonality:	Polyclonal
Conjugate:	This IL-1 beta antibody is un-conjugated
Application:	Western Blotting (WB), Proximity Ligation Assay (PLA)

Product Details

Purpose:	Rabbit polyclonal antibody raised against a full-length human IL1B protein.
Immunogen:	IL1B (AAH08678.1, 1 a.a. ~ 269 a.a) full-length human protein.
Sequence:	MAEVP ELASE MMAYYS GNED DLFFEADGPK QMKCSFQDLD LCPLDGGIQL RISDHHYSKG FRQAASVVVA MDKLRKMLVP CPQTFQENDL STFFPFIFEE EPIFFDTWDN EAYVHDAPVR SLNCTLRDSQ QKSLVMSGPY ELKALHLQGQ DMEQQVVFMS SFVQGEESND KIPVALGLKE KNLYLSCVLK DDKPTLQLES VDPKNYPKKK MEKRFVFNKI EINNKFES AQFPNWIYST SQAENMPVFL GGTKGGQDIT DFTMQFVSS
Cross-Reactivity:	Human, Mouse
Characteristics:	Antibody reactive against mammalian transfected lysate.

Target Details

Target:	IL-1 beta (IL1B)
Alternative Name:	IL1B (IL1B Products)
Background:	Full Gene Name: interleukin 1, beta Synonyms: IL-1,IL1-BETA,IL1F2
Gene ID:	3553
NCBI Accession:	NM_000576
Pathways:	NF-kappaB Signaling , Interferon-gamma Pathway , TLR Signaling , Negative Regulation of Hormone Secretion , Cellular Response to Molecule of Bacterial Origin , Carbohydrate Homeostasis , Glycosaminoglycan Metabolic Process , Myometrial Relaxation and Contraction , Regulation of Leukocyte Mediated Immunity , Positive Regulation of Immune Effector Process , Autophagy , Cancer Immune Checkpoints , Inflammasome

Application Details

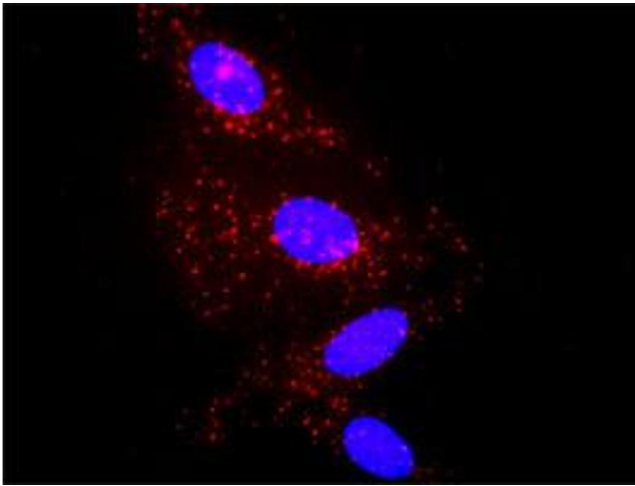
Application Notes:	Optimal working dilution should be determined by the investigator.
Restrictions:	For Research Use only

Handling

Buffer:	In 1x PBS, pH 7.4
Handling Advice:	Aliquot to avoid repeated freezing and thawing.
Storage:	-20 °C
Storage Comment:	Store at -20°C or lower. Aliquot to avoid repeated freezing and thawing.

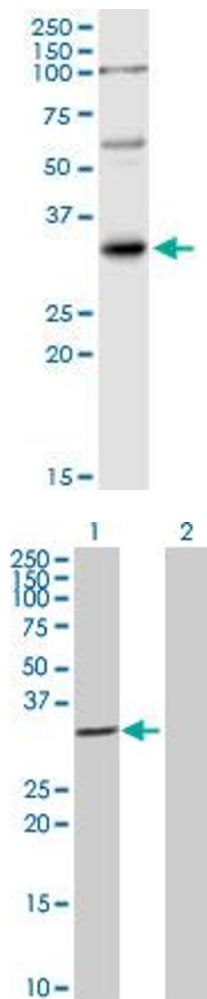
Publications

Product cited in:	Nievergelt, Marazzi, Schoop, Altmann, Gertsch: "Ginger phenylpropanoids inhibit IL-1beta and prostanoid secretion and disrupt arachidonate-phospholipid remodeling by targeting phospholipases A2." in: Journal of immunology (Baltimore, Md. : 1950) , Vol. 187, Issue 8, pp. 4140-50, (2011) (PubMed).
-------------------	---



Proximity Ligation Assay

Image 1. Proximity Ligation Analysis of protein-protein interactions between IL1B and A2M. HeLa cells were stained with anti-IL1B rabbit purified polyclonal 1:1200 and anti-A2M mouse monoclonal antibody 1:50. Each red dot represents the detection of protein-protein interaction complex, and nuclei were counterstained with DAPI (blue).



Western Blotting

Image 2. IL1B MaxPab rabbit polyclonal antibody. Western Blot analysis of IL1B expression in mouse testis.

Western Blotting

Image 3. Western Blot analysis of IL1B expression in transfected 293T cell line by IL1B MaxPab polyclonal antibody.

Lane 1: IL1B transfected lysate(30.70 KDa).

Lane 2: Non-transfected lysate.