

Datasheet for ABIN517000
anti-IL1R1 antibody (AA 1-569)



[Go to Product page](#)

3 Images

Overview

Quantity:	50 µg
Target:	IL1R1
Binding Specificity:	AA 1-569
Reactivity:	Human
Host:	Mouse
Clonality:	Polyclonal
Conjugate:	This IL1R1 antibody is un-conjugated
Application:	Western Blotting (WB), Flow Cytometry (FACS)

Product Details

Purpose:	Mouse polyclonal antibody raised against a full-length human IL1R1 protein.
Immunogen:	IL1R1 (NP_000868.1, 1 a.a. ~ 569 a.a) full-length human protein.
Sequence:	MKVLLRLICF IALLISSLEA DKCKEREEKI ILVSSANEID VRPCPLNPNE HKGTTITWYKD DSKTPVSTEQ ASRIHQHKEK LWFVPAKVED SGHYVCVVRN SSYCLRIKIS AKFVENEPNL CYNAQAIFKQ KLPVAGDGGL VCPYMEFFKN ENNELPKLQW YKDCKPLLLD NIHFSGVKDR LIVMVAEKH RGNVTCHASY TYLGKQYPIT RVIEFITLEE NKPTRPVIVS PANETMEVDL GSQIQLICNV TGQLSDIAYW KWNGSVIDED DPVLGEDYYS VENPANKRRS TLITVLNISE IESRFYKHPF TCFAKNTHGI DAAIYQLIYP VTNFQKHMIG ICVTLTVIIV CSVFIYKIFK IDIVLWYRDS CYDFLPIKAS DGKTYDAYIL YPKTVGEGST SDCDIFVFKV LPEVLEKQCG YKLFYGRDD YVGEDIVEVI NENVKKSRRLL IILVRETSG FSWLGGSSSEE QIAMYNALVQ DGIKVVLEL EKIQDYEKMP ESIKFIKQKH GAIRWSGDFT QGPQSAKTRF WKNVRYHMPV QRRSPSSKHQ LLSPATKEKL QREAHVPLG

Product Details

Cross-Reactivity:	Human
Characteristics:	Antibody reactive against mammalian transfected lysate.

Target Details

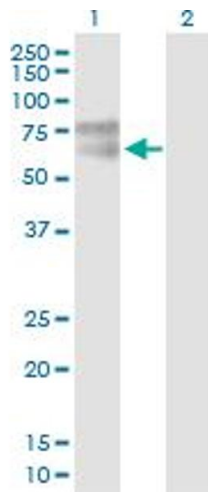
Target:	IL1R1
Alternative Name:	IL1R1 (IL1R1 Products)
Background:	Full Gene Name: interleukin 1 receptor, type I Synonyms: CD121A,D2S1473,IL-1R-alpha,IL1R,IL1RA,P80
Gene ID:	3554
NCBI Accession:	NM_000877
Pathways:	NF-kappaB Signaling , Carbohydrate Homeostasis , Cancer Immune Checkpoints

Application Details

Application Notes:	Optimal working dilution should be determined by the investigator.
Restrictions:	For Research Use only

Handling

Buffer:	In 1x PBS, pH 7.4
Handling Advice:	Aliquot to avoid repeated freezing and thawing.
Storage:	-20 °C
Storage Comment:	Store at -20°C or lower. Aliquot to avoid repeated freezing and thawing.

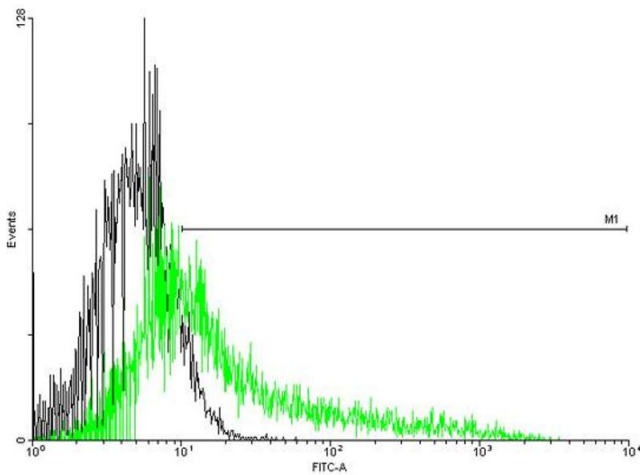


Western Blotting

Image 1. Western Blot analysis of IL1R1 expression in transfected 293T cell line by IL1R1 MaxPab polyclonal antibody.

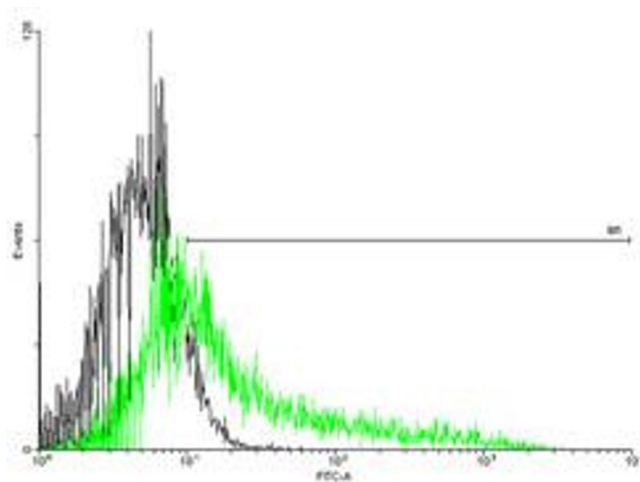
Lane 1: IL1R1 transfected lysate(62.59 KDa).

Lane 2: Non-transfected lysate.



Flow Cytometry

Image 2. FACS analysis of negative control 293 cells (Black) and IL1R1 expressing 293 cells (Green) using IL1R1 purified MaxPab mouse polyclonal antibody.



Flow Cytometry

Image 3. FACS analysis of negative control 293 cells (Black) and IL1R1 expressing 293 cells (Green) using IL1R1 purified MaxPab mouse polyclonal antibody.