

Datasheet for ABIN517054
anti-IL-6 Receptor antibody (AA 21-120)



[Go to Product page](#)

2 Images

Overview

Quantity:	100 µg
Target:	IL-6 Receptor (IL6R)
Binding Specificity:	AA 21-120
Reactivity:	Human
Host:	Mouse
Clonality:	Monoclonal
Conjugate:	This IL-6 Receptor antibody is un-conjugated
Application:	Western Blotting (WB), ELISA

Product Details

Purpose:	Mouse monoclonal antibody raised against a partial recombinant IL6R.
Immunogen:	IL6R (NP_000556, 21 a.a. ~ 120 a.a) partial recombinant protein with GST tag. MW of the GST tag alone is 26 KDa.
Sequence:	APRRCPAQEV ARGVLTSLPG DSVTLTCPGV EPEDNATVHW VLRKPAAGSH PSRWAGMGRRL LLLRVQLHD SGNYSYRAG RPAGTVHLLV DVPPEEPQLS
Clone:	1E11
Isotype:	IgG1
Cross-Reactivity:	Human
Characteristics:	Antibody Reactive Against Recombinant Protein.

Target Details

Target:	IL-6 Receptor (IL6R)
Alternative Name:	IL6R (IL6R Products)
Background:	Full Gene Name: interleukin 6 receptor Synonyms: CD126,IL-6R-1,IL-6R-alpha,IL6RA,MGC104991
Gene ID:	3570
NCBI Accession:	NM_000565
Pathways:	JAK-STAT Signaling , Autophagy , Growth Factor Binding , Cancer Immune Checkpoints

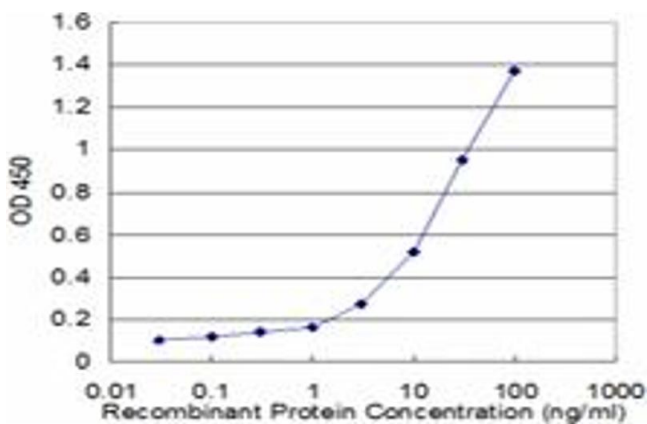
Application Details

Application Notes:	Optimal working dilution should be determined by the investigator.
Restrictions:	For Research Use only

Handling

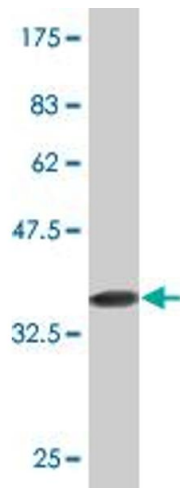
Buffer:	In 1x PBS, pH 7.4
Handling Advice:	Aliquot to avoid repeated freezing and thawing.
Storage:	-20 °C
Storage Comment:	Store at -20°C or lower. Aliquot to avoid repeated freezing and thawing.

Images



ELISA

Image 1. Detection limit for recombinant GST tagged IL6R is approximately 0.3ng/ml as a capture antibody.



Western Blotting

Image 2. Western Blot detection against Immunogen (36.74 kDa).