



[Go to Product page](#)

Datasheet for ABIN517088  
**anti-IL-10 antibody (AA 1-178)**

3 Images

Overview

Quantity:	100 µg
Target:	IL-10 (IL10)
Binding Specificity:	AA 1-178
Reactivity:	Human
Host:	Rabbit
Clonality:	Polyclonal
Conjugate:	This IL-10 antibody is un-conjugated
Application:	Western Blotting (WB), Proximity Ligation Assay (PLA)

Product Details

Purpose:	Rabbit polyclonal antibody raised against a full-length human IL10 protein.
Immunogen:	IL10 (AAI04253.1, 1 a.a. ~ 178 a.a) full-length human protein.
Sequence:	MHSSALLCCL VLLTGVRASP GQGTQSENSC THFPGNLPNM LRDLRDAFSR VKTFFQMKDQ LDNLLKESL LEDFKGYLGC QALSEMIQFY LEEVMPQAEN QDPDIKAHVN SLGENLKTLL LRLRRCHRFL PCENKSKAVE QVKNAFNKLQ EKGIIYKAMSE FDIFINYIEA YMTMKIRN
Cross-Reactivity:	Human
Characteristics:	Antibody reactive against mammalian transfected lysate.

Target Details

Target:	IL-10 (IL10)
---------	--------------

## Target Details

Alternative Name:	IL10 ( <a href="#">IL10 Products</a> )
Background:	Full Gene Name: interleukin 10 Synonyms: CSIF,IL-10,IL10A,MGC126450,MGC126451,TGIF
Gene ID:	3586
NCBI Accession:	<a href="#">NM_000572</a>
Pathways:	<a href="#">Cellular Response to Molecule of Bacterial Origin</a> , <a href="#">Regulation of Leukocyte Mediated Immunity</a> , <a href="#">Production of Molecular Mediator of Immune Response</a> , <a href="#">Maintenance of Protein Location</a> , <a href="#">Cancer Immune Checkpoints</a>

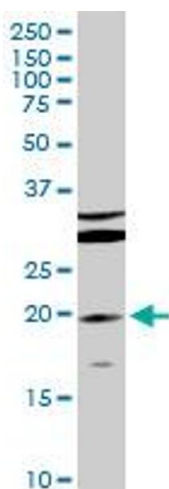
## Application Details

Application Notes:	Optimal working dilution should be determined by the investigator.
Restrictions:	For Research Use only

## Handling

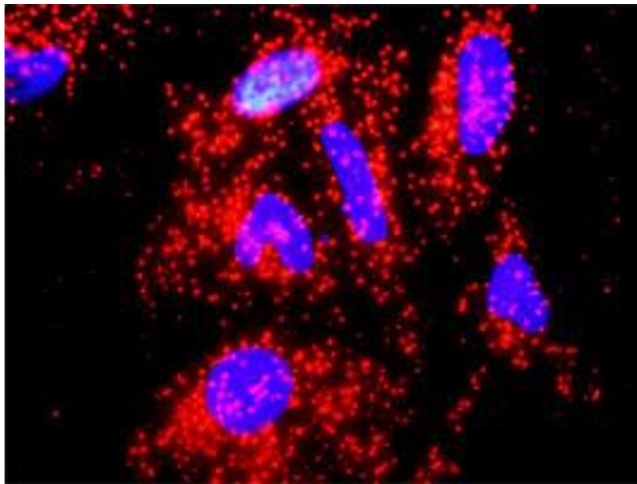
Buffer:	In 1x PBS, pH 7.4
Handling Advice:	Aliquot to avoid repeated freezing and thawing.
Storage:	-20 °C
Storage Comment:	Store at -20°C or lower. Aliquot to avoid repeated freezing and thawing.

## Images



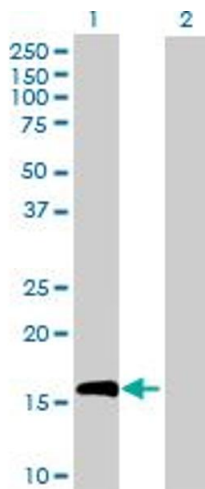
### Western Blotting

**Image 1.** IL10 MaxPab rabbit polyclonal antibody. Western Blot analysis of IL10 expression in Jurkat.



### Proximity Ligation Assay

**Image 2.** Proximity Ligation Analysis of protein-protein interactions between IL10 and A2M. HeLa cells were stained with anti-IL10 rabbit purified polyclonal 1:1200 and anti-A2M mouse monoclonal antibody 1:50. Each red dot represents the detection of protein-protein interaction complex, and nuclei were counterstained with DAPI (blue).



### Western Blotting

**Image 3.** Western Blot analysis of IL10 expression in transfected 293T cell line by IL10 MaxPab polyclonal antibody.

Lane 1: IL10 transfected lysate(20.50 kDa).

Lane 2: Non-transfected lysate.