

Datasheet for ABIN517119

anti-IL13 Receptor alpha 1 antibody (AA 1-427)**3** Images[Go to Product page](#)

Overview

Quantity:	50 µg
Target:	IL13 Receptor alpha 1 (IL13RA1)
Binding Specificity:	AA 1-427
Reactivity:	Human
Host:	Mouse
Clonality:	Polyclonal
Conjugate:	This IL13 Receptor alpha 1 antibody is un-conjugated
Application:	Western Blotting (WB), Flow Cytometry (FACS)

Product Details

Purpose:	Mouse polyclonal antibody raised against a full-length human IL13RA1 protein.
Immunogen:	IL13RA1 (NP_001551.1, 1 a.a. ~ 427 a.a) full-length human protein.
Sequence:	MEWPARLCGL WALLLCAGGG GGGGGAAPTE TQPPVTNLSV SVENLCTVIW TWNPPEGASS NCSLWYFSHF GDKQDKKIAP ETRRSIEVPL NERICLQVGS QCSTNESEKP SILVEKCISP PEGDPESAVT ELQCIWHNLS YMKCSWLPGR NTSPDTNYTL YWHRSLLEKI HQCENIFREG QYFGCSFDLT KVKDSSFEQH SVQIMVKDNA GKIKPSFNIV PLTSRVKPDP PHIKNLSFHN DDLYVQWENP QNFISRCLFY EVEVNSQTE THNVFYVQEA KCENPEFERN VENTSCFMVP GVLPTLNTV RIRVKTNLC YEDDKLWSNW SQEMSIGKKR NSTLYITMLL IVPVIVAGAI IVLLLYLKRL KIIIFPIPD PGKIFKEMFG DQNDLTLHWK KYDIYEKQTK EETDSVVLIE NLKKASQ
Cross-Reactivity:	Human
Characteristics:	Antibody reactive against mammalian transfected lysate.

Target Details

Target:	IL13 Receptor alpha 1 (IL13RA1)
Alternative Name:	IL13RA1 (IL13RA1 Products)
Background:	Full Gene Name: interleukin 13 receptor, alpha 1 Synonyms: CD213A1,IL-13Ra,NR4
Gene ID:	3597
NCBI Accession:	NM_001560
Pathways:	JAK-STAT Signaling , Positive Regulation of Immune Effector Process , Production of Molecular Mediator of Immune Response

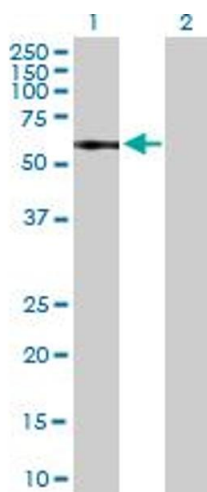
Application Details

Application Notes:	Optimal working dilution should be determined by the investigator.
Restrictions:	For Research Use only

Handling

Buffer:	In 1x PBS, pH 7.4
Handling Advice:	Aliquot to avoid repeated freezing and thawing.
Storage:	-20 °C
Storage Comment:	Store at -20°C or lower. Aliquot to avoid repeated freezing and thawing.

Images

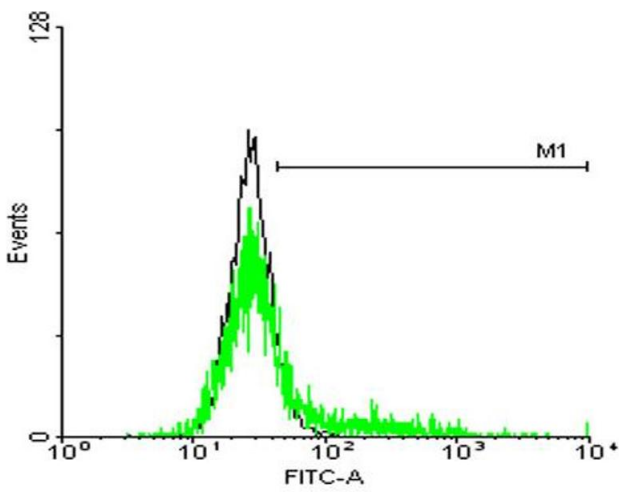


Western Blotting

Image 1. Western Blot analysis of IL13RA1 expression in transfected 293T cell line by IL13RA1 MaxPab polyclonal antibody.

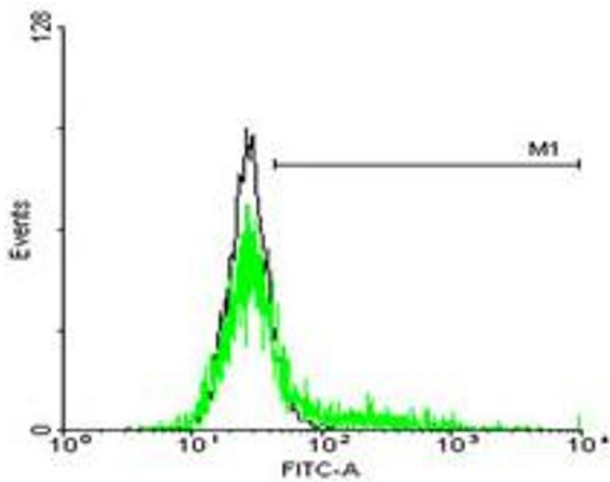
Lane 1: IL13RA1 transfected lysate(46.97 KDa).

Lane 2: Non-transfected lysate.



Flow Cytometry

Image 2. FACS analysis of negative control 293 cells (Black) and IL13RA1 expressing 293 cells (Green) using IL13RA1 purified MaxPab mouse polyclonal antibody.



Flow Cytometry

Image 3. FACS analysis of negative control 293 cells (Black) and IL13RA1 expressing 293 cells (Green) using IL13RA1 purified MaxPab mouse polyclonal antibody.