



[Go to Product page](#)

Datasheet for ABIN517141
anti-IL-15 antibody (AA 46-162)

2 Images

Overview

Quantity:	200 µL
Target:	IL-15 (IL15)
Binding Specificity:	AA 46-162
Reactivity:	Human
Host:	Mouse
Clonality:	Monoclonal
Conjugate:	This IL-15 antibody is un-conjugated
Application:	Western Blotting (WB), ELISA

Product Details

Purpose:	Mouse monoclonal antibody raised against a full-length recombinant IL15.
Immunogen:	IL15 (NM_000585.2, 46 a.a. ~ 162 a.a) full-length recombinant protein.
Sequence:	NWVNVISDLK KIEDLIQSMH IDATLYTESD VHPSCCKVTAM KCFLLELQVI SLESGDASIH DTVENLILA NNSLSSNGNV TESGCKECEE LEEKNIKEFL QSFVHIVQMF INTS
Clone:	2F9
Isotype:	IgG1 kappa
Cross-Reactivity:	Human

Target Details

Target:	IL-15 (IL15)
---------	--------------

Target Details

Alternative Name: IL15 ([IL15 Products](#))

Background: Full Gene Name: interleukin 15
Synonyms: IL-15,MGC9721

Gene ID: 3600

Pathways: [JAK-STAT Signaling](#), [Glycosaminoglycan Metabolic Process](#)

Application Details

Application Notes: Optimal working dilution should be determined by the investigator.

Comment: Product Quality tested by: Antibody Reactive Against Recombinant Protein.

Restrictions: For Research Use only

Handling

Format: Liquid

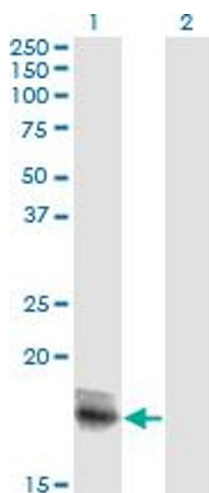
Buffer: In ascites fluid

Handling Advice: Aliquot to avoid repeated freezing and thawing.

Storage: -20 °C

Storage Comment: Store at -20°C or lower. Aliquot to avoid repeated freezing and thawing.

Images



Western Blotting

Image 1. Western Blot analysis of IL15 expression in transfected 293T cell line by IL15 monoclonal antibody (M18A), clone 2F9.

Lane 1: IL15 transfected lysate(18.1 kDa).

Lane 2: Non-transfected lysate.



Western Blotting

Image 2. Western Blot detection against Immunogen (12.54 KDa).