



[Go to Product page](#)

Datasheet for ABIN517172
anti-ING1 antibody (AA 1-279)

2 Images

Overview

Quantity:	50 µL
Target:	ING1
Binding Specificity:	AA 1-279
Reactivity:	Human
Host:	Mouse
Clonality:	Polyclonal
Conjugate:	This ING1 antibody is un-conjugated
Application:	Western Blotting (WB), Immunofluorescence (IF)

Product Details

Purpose:	Mouse polyclonal antibody raised against a full-length human ING1 protein.
Immunogen:	ING1 (NP_937862, 1 a.a. ~ 279 a.a) full-length human protein.
Sequence:	MLSPANGEQL HLVNYVEDYL DSIESLPFDL QRNVSLMREI DAKYQEILKE LDECYERFSR ETDGAQKRRM LHCVQRALIR SQELGDEKIQ IVSQMVVELVE NRTRQVDSHV ELFEAQQELG DTAGNSGKAG ADRPKGEAAA QADKPNKRS RRQRNNENRE NASSNHDHDD GASGTPKEKK AKTSKKKKRS KAKAEREASP ADLPIDNPEP TYCLCNQVSY GEMIGCDNDE CPIEWFHFSC VGLNHKPKGK WYCPKCRGEN EKTMDKALEK SKKERAYNR
Cross-Reactivity:	Human
Characteristics:	Antibody reactive against mammalian transfected lysate.

Target Details

Target:	ING1
Alternative Name:	ING1 (ING1 Products)
Background:	Full Gene Name: inhibitor of growth family, member 1 Synonyms: p24ING1c,p33,p33ING1,p33ING1b,p47,p47ING1a
Gene ID:	3621
NCBI Accession:	NM_198219
Pathways:	Protein targeting to Nucleus , Autophagy

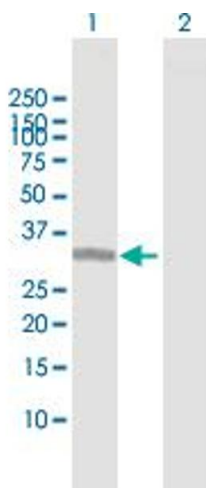
Application Details

Application Notes:	Optimal working dilution should be determined by the investigator.
Restrictions:	For Research Use only

Handling

Format:	Liquid
Buffer:	No additive
Preservative:	Without preservative
Handling Advice:	Aliquot to avoid repeated freezing and thawing.
Storage:	-20 °C
Storage Comment:	Store at -20°C or lower. Aliquot to avoid repeated freezing and thawing.

Images

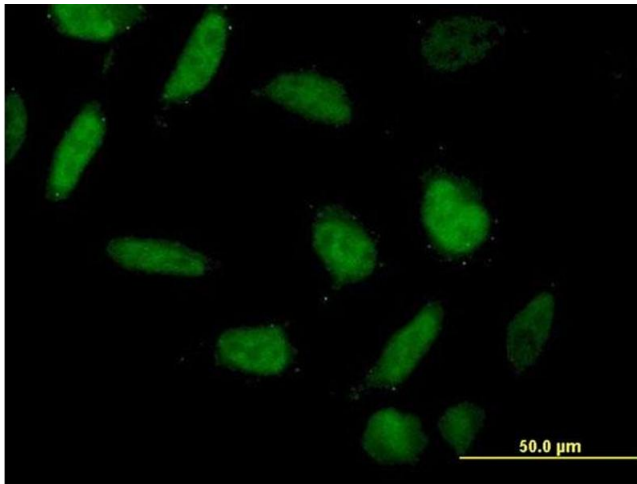


Western Blotting

Image 1. Western Blot analysis of ING1 expression in transfected 293T cell line by ING1 MaxPab polyclonal antibody.

Lane 1: ING1 transfected lysate(30.69 KDa).

Lane 2: Non-transfected lysate.



Immunofluorescence

Image 2. Immunofluorescence of purified MaxPab antibody to ING1 on HeLa cell. [antibody concentration 10 ug/ml]