



[Go to Product page](#)

Datasheet for ABIN517173  
**anti-ING1 antibody (AA 1-279)**

2 Images

Overview

Quantity:	100 µL
Target:	ING1
Binding Specificity:	AA 1-279
Reactivity:	Human
Host:	Rabbit
Clonality:	Polyclonal
Conjugate:	This ING1 antibody is un-conjugated
Application:	Western Blotting (WB), Immunoprecipitation (IP)

Product Details

Purpose:	Rabbit polyclonal antibody raised against a full-length human ING1 protein.
Immunogen:	ING1 (NP_937862.1, 1 a.a. ~ 279 a.a) full-length human protein.
Sequence:	MLSPANGEQL HLVNYVEDYL DSIESLPFDL QRNVSLMREI DAKYQEILKE LDECYERFSR ETDGAQKRRM LHCVQRALIR SQELGDEKIQ IVSQMVVELVE NRTRQVDSHV ELFEAQQELG DTAGNSGKAG ADRPKGEAAA QADKPNKRS RRQRNNENRE NASSNHDHDD GASGTPKEKK AKTSKKKKRS KAKAEREASP ADLPIDNPEP TYCLCNQVSY GEMIGCDNDE CPIEWFHFSC VGLNHKPKGK WYCPKORGEN EKTMDKALEK SKKERAYNR
Cross-Reactivity:	Human
Characteristics:	Antibody reactive against mammalian transfected lysate.

## Target Details

Target:	ING1
Alternative Name:	ING1 ( <a href="#">ING1 Products</a> )
Background:	Full Gene Name: inhibitor of growth family, member 1 Synonyms: p24ING1c,p33,p33ING1,p33ING1b,p47,p47ING1a
Gene ID:	3621
NCBI Accession:	<a href="#">NM_198219</a>
Pathways:	<a href="#">Protein targeting to Nucleus, Autophagy</a>

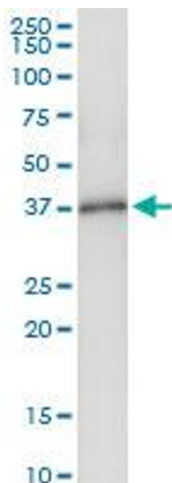
## Application Details

Application Notes:	Optimal working dilution should be determined by the investigator.
Restrictions:	For Research Use only

## Handling

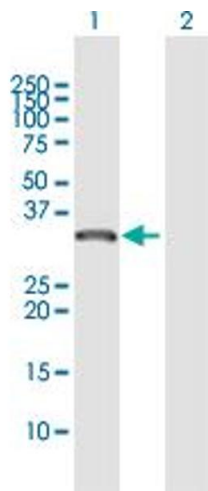
Format:	Liquid
Buffer:	No additive
Preservative:	Without preservative
Handling Advice:	Aliquot to avoid repeated freezing and thawing.
Storage:	-20 °C
Storage Comment:	Store at -20°C or lower. Aliquot to avoid repeated freezing and thawing.

## Images



### Immunoprecipitation

**Image 1.** Immunoprecipitation of ING1 transfected lysate using anti-ING1 MaxPab rabbit polyclonal antibody and Protein A Magnetic Bead , and immunoblotted with ING1 MaxPab mouse polyclonal antibody (B01) .



### Western Blotting

**Image 2.** Western Blot analysis of ING1 expression in transfected 293T cell line by ING1 MaxPab polyclonal antibody.

Lane 1: ING1 transfected lysate(31.90 KDa).

Lane 2: Non-transfected lysate.