

Datasheet for ABIN517182
anti-INHBB antibody (AA 1-407)

3 Images

[Go to Product page](#)

Overview

Quantity:	100 µg
Target:	INHBB
Binding Specificity:	AA 1-407
Reactivity:	Human
Host:	Rabbit
Clonality:	Polyclonal
Conjugate:	This INHBB antibody is un-conjugated
Application:	Western Blotting (WB), Proximity Ligation Assay (PLA)

Product Details

Purpose:	Rabbit polyclonal antibody raised against a full-length human INHBB protein.
Immunogen:	INHBB (AAH30029.1, 1 a.a. ~ 407 a.a) full-length human protein.
Sequence:	MDGLPGRALG AACLLLLAAG WLGP EAWGSP TPPPTPAAQP PPPPPGSPGG SQDTCTSCGG FRRPEELGRV DGDFLEAVKR HILSRLQMRG RPNITHAVPK AAMVTALRKL HAGKVREDGR VEIPHLDGHA SPGADGQERV SEIISFAETD GLASSRVRLY FFISNEGNQN LFVVQASLWL YLKLLPYVLE KGSRRKVRVK VYFQEQGHGD RWNMVEKRVD LKRS GWHTFP L TEAIQALFE RGERRLNLDV QCDSQCQELAV VPVFVDPGEE SHRPFVVVQA RLGDSRHRIR KRGLECDGRT NLCCRQQFFI DFRLIGWNDW IIAPTSYYGN YCEGSCPAYL AGVPGSASSF HTAVVNQYRM RGLNPGTVNS CCIPTKLSTM SMLYFDDEYN IVKRDVPNMI VEECGCA
Cross-Reactivity:	Human, Mouse
Characteristics:	Antibody reactive against mammalian transfected lysate.

Target Details

Target:	INHBB
Alternative Name:	INHBB (INHBB Products)
Background:	Full Gene Name: inhibin, beta B Synonyms: MGC157939
Gene ID:	3625
Pathways:	Peptide Hormone Metabolism , Hormone Activity , Negative Regulation of Hormone Secretion

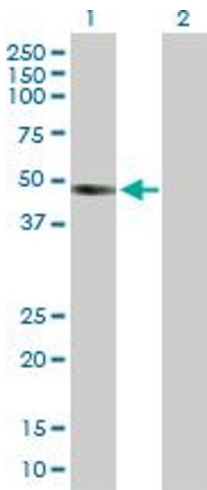
Application Details

Application Notes:	Optimal working dilution should be determined by the investigator.
Restrictions:	For Research Use only

Handling

Buffer:	In 1x PBS, pH 7.4
Handling Advice:	Aliquot to avoid repeated freezing and thawing.
Storage:	-20 °C
Storage Comment:	Store at -20°C or lower. Aliquot to avoid repeated freezing and thawing.

Images

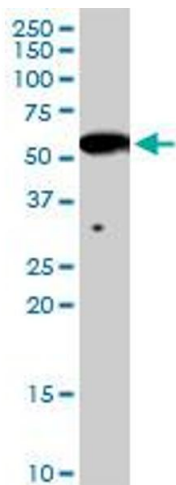


Western Blotting

Image 1. Western Blot analysis of INHBB expression in transfected 293T cell line by INHBB MaxPab polyclonal antibody.

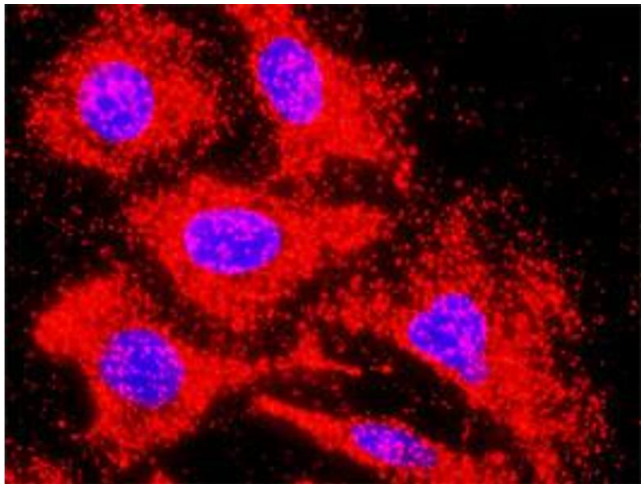
Lane 1: INHBB transfected lysate(45.20 KDa).

Lane 2: Non-transfected lysate.



Western Blotting

Image 2. INHBB MaxPab rabbit polyclonal antibody. Western Blot analysis of INHBB expression in mouse brain.



Proximity Ligation Assay

Image 3. Proximity Ligation Analysis of protein-protein interactions between INHBB and ACVR1C. HeLa cells were stained with anti-INHBB rabbit purified polyclonal 1:1200 and anti-ACVR1C mouse monoclonal antibody 1:50. Each red dot represents the detection of protein-protein interaction complex, and nuclei were counterstained with DAPI (blue).