



[Go to Product page](#)

Datasheet for ABIN517183
anti-CXCL10 antibody (AA 1-98)

1 Image

Overview

Quantity:	100 µg
Target:	CXCL10
Binding Specificity:	AA 1-98
Reactivity:	Human
Host:	Rabbit
Clonality:	Polyclonal
Conjugate:	This CXCL10 antibody is un-conjugated
Application:	Western Blotting (WB)

Product Details

Purpose:	Rabbit polyclonal antibody raised against a full-length human CXCL10 protein.
Immunogen:	CXCL10 (NP_001556.1, 1 a.a. ~ 98 a.a) full-length human protein.
Sequence:	MNQTAILICC LIFLTLSGIQ GVPLSRTVRC TCISISNQPV NPRSLEKLEI IPASQFCPRV EIIATMKKKG EKRCLNPESK AIKNLLKAVS KEMSKRSP
Cross-Reactivity:	Human
Characteristics:	Antibody reactive against mammalian transfected lysate.

Target Details

Target:	CXCL10
Alternative Name:	CXCL10 (CXCL10 Products)

Target Details

Background:	Full Gene Name: chemokine (C-X-C motif) ligand 10 Synonyms: C7,IFI10,INP10,IP-10,SCYB10,crg-2,gIP-10,mob-1
Gene ID:	3627
NCBI Accession:	NM_001565

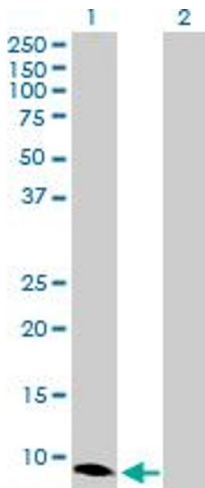
Application Details

Application Notes:	Optimal working dilution should be determined by the investigator.
Restrictions:	For Research Use only

Handling

Buffer:	In 1x PBS, pH 7.4
Handling Advice:	Aliquot to avoid repeated freezing and thawing.
Storage:	-20 °C
Storage Comment:	Store at -20°C or lower. Aliquot to avoid repeated freezing and thawing.

Images



Western Blotting

Image 1. Western Blot analysis of CXCL10 expression in transfected 293T cell line by CXCL10 MaxPab polyclonal antibody.

Lane 1: CXCL10 transfected lysate(10.90 kDa).

Lane 2: Non-transfected lysate.