

Datasheet for ABIN517199
anti-INPPL1 antibody (AA 1159-1258)[Go to Product page](#)

1 Image

Overview

Quantity:	100 µg
Target:	INPPL1
Binding Specificity:	AA 1159-1258
Reactivity:	Human
Host:	Mouse
Clonality:	Monoclonal
Conjugate:	This INPPL1 antibody is un-conjugated
Application:	Western Blotting (WB), ELISA

Product Details

Purpose:	Mouse monoclonal antibody raised against a partial recombinant INPPL1.
Immunogen:	INPPL1 (NP_001558, 1159 a.a. ~ 1258 a.a) partial recombinant protein with GST tag. MW of the GST tag alone is 26 KDa.
Sequence:	PSDYGRPLSF PPPRIRESIQ EDLAEAPCL QGGRASGLGE AGMSAWLRAI GLERYEEGLV HNGWDDLEFL SDITEEDLEE AGVQDPAHKR LLLDTLQLSK
Clone:	10G6
Isotype:	IgG1
Cross-Reactivity:	Human
Characteristics:	Antibody Reactive Against Recombinant Protein.

Target Details

Target:	INPPL1
Alternative Name:	INPPL1 (INPPL1 Products)
Background:	Full Gene Name: inositol polyphosphate phosphatase-like 1 Synonyms: SHIP2
Gene ID:	3636
NCBI Accession:	NM_001567
Pathways:	Platelet-derived growth Factor Receptor Signaling

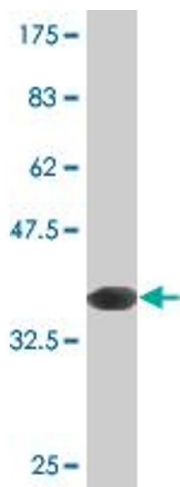
Application Details

Application Notes:	Optimal working dilution should be determined by the investigator.
Restrictions:	For Research Use only

Handling

Buffer:	In 1x PBS, pH 7.4
Handling Advice:	Aliquot to avoid repeated freezing and thawing.
Storage:	-20 °C
Storage Comment:	Store at -20°C or lower. Aliquot to avoid repeated freezing and thawing.

Images



Western Blotting

Image 1. Western Blot detection against Immunogen (36.74 KDa) .