

Datasheet for ABIN517216  
**anti-IRF1 antibody (AA 1-325)**



[Go to Product page](#)

2 Images

Overview

Quantity:	50 µL
Target:	IRF1
Binding Specificity:	AA 1-325
Reactivity:	Human
Host:	Mouse
Clonality:	Polyclonal
Conjugate:	This IRF1 antibody is un-conjugated
Application:	Western Blotting (WB), Immunofluorescence (IF)

Product Details

Purpose:	Mouse polyclonal antibody raised against a full-length human IRF1 protein.
Immunogen:	IRF1 (NP_002189.1, 1 a.a. ~ 325 a.a) full-length human protein.
Sequence:	MPITRMRMRP WLEMQINSNQ IPGLIWINKE EMIFQIPWKH AAKHGWDINK DACLFRSWAI HTGRYKAGEK EPDPKTWKAN FRCAMNSLPD IEEVKDQSRN KGSSAVRVYR MLPPLTKNQR KERKSKSSRD AKSKAKRKSC GDSSPDTFSD GLSSSTLPDD HSSYTVPGYM QDLEVEQALT PALSPCAVSS TLPDWHIPVE VVPDSTSDLY NFQVSPMPST SEATDEDEE GKLPEDIMKL LEQSEWQPTN VDGKGYLLNE PGVQPTSVMY DFSCKEEPEI DSPGGDIGLS LQRVFTDLKN MDATWLDSLL TPVRLPSIQA IPCAP
Cross-Reactivity:	Human
Characteristics:	Antibody reactive against mammalian transfected lysate.

## Target Details

---

Target:	IRF1
Alternative Name:	IRF1 ( <a href="#">IRF1 Products</a> )
Background:	Full Gene Name: interferon regulatory factor 1 Synonyms: IRF-1,MAR
Gene ID:	3659
NCBI Accession:	<a href="#">NM_002198</a>
Pathways:	<a href="#">Interferon-gamma Pathway</a> , <a href="#">Response to Growth Hormone Stimulus</a> , <a href="#">Positive Regulation of Immune Effector Process</a> , <a href="#">Hepatitis C</a> , <a href="#">Autophagy</a>

## Application Details

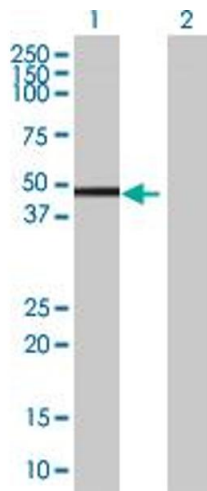
---

Application Notes:	Optimal working dilution should be determined by the investigator.
Restrictions:	For Research Use only

## Handling

---

Format:	Liquid
Buffer:	No additive
Preservative:	Without preservative
Handling Advice:	Aliquot to avoid repeated freezing and thawing.
Storage:	-20 °C
Storage Comment:	Store at -20°C or lower. Aliquot to avoid repeated freezing and thawing.

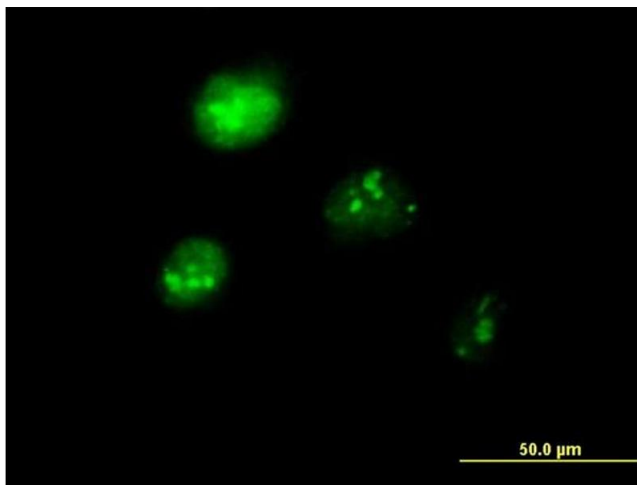


### Western Blotting

**Image 1.** Western Blot analysis of IRF1 expression in transfected 293T cell line by IRF1 MaxPab polyclonal antibody.

Lane 1: IRF1 transfected lysate(35.75 KDa).

Lane 2: Non-transfected lysate.



### Immunofluorescence

**Image 2.** Immunofluorescence of purified MaxPab antibody to IRF1 on HeLa cell. [antibody concentration 10 ug/ml]