



Datasheet for ABIN517220  
**anti-IRF2 antibody (AA 1-349)**



[Go to Product page](#)

1 Image

Overview

Quantity:	100 µg
Target:	IRF2
Binding Specificity:	AA 1-349
Reactivity:	Human
Host:	Rabbit
Clonality:	Polyclonal
Conjugate:	This IRF2 antibody is un-conjugated
Application:	Western Blotting (WB)

Product Details

Purpose:	Rabbit polyclonal antibody raised against a full-length human IRF2 protein.
Immunogen:	IRF2 (AAH15803.1, 1 a.a. ~ 349 a.a) full-length human protein.
Sequence:	MPVERMRMRP WLEEQINSNT IPGLKWLNKE KKIFQIPWMH AARHGWDVEK DAPLFRNWAI HTGKHQPGVD KPDPKTWKAN FRCAMNSLPD IEEVKDKSIK KGNNAFRVYR MLPLSERPSK KGKKPKTEKE DKVKHIKQEP VESSLGLSNG VSDLSPEYAV LTSTIKNEVD STVNIIVGQ SHLDSNIENQ EIVTNPPDIC QVVEVTTESD EQPVSMSELY PLQISPVSSY AESETTDSVP SDEESAEGRP HWRKRNIEGK QYLSNMGTRG SYLLPGMASF VTSNKPDLQV TIKEESNPVP YNSSWPPFQD LPLSSSMTPA SSSSRPDRET RASVIKKTSD ITQARVKSC
Cross-Reactivity:	Human
Characteristics:	Antibody reactive against mammalian transfected lysate.

## Target Details

Target: IRF2

Alternative Name: IRF2 ([IRF2 Products](#))

Background: Full Gene Name: interferon regulatory factor 2  
Synonyms: DKFZp686F0244,IRF-2

Gene ID: 3660

## Application Details

Application Notes: Optimal working dilution should be determined by the investigator.

Restrictions: For Research Use only

## Handling

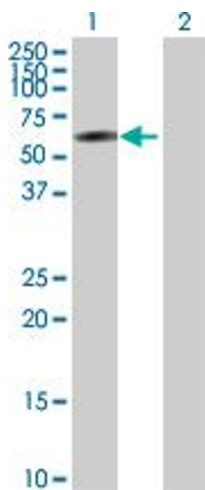
Buffer: In 1x PBS, pH 7.4

Handling Advice: Aliquot to avoid repeated freezing and thawing.

Storage: -20 °C

Storage Comment: Store at -20°C or lower. Aliquot to avoid repeated freezing and thawing.

## Images



### Western Blotting

**Image 1.** Western Blot analysis of IRF2 expression in transfected 293T cell line by IRF2 MaxPab polyclonal antibody.

Lane 1: IRF2 transfected lysate(39.40 KDa).

Lane 2: Non-transfected lysate.