



[Go to Product page](#)

Datasheet for ABIN517260

## anti-ITGB6 antibody (AA 604-707)

### 2 Images

#### Overview

Quantity:	100 µg
Target:	ITGB6
Binding Specificity:	AA 604-707
Reactivity:	Human
Host:	Mouse
Clonality:	Monoclonal
Conjugate:	This ITGB6 antibody is un-conjugated
Application:	Western Blotting (WB), ELISA

#### Product Details

Purpose:	Mouse monoclonal antibody raised against a partial recombinant ITGB6.
Immunogen:	ITGB6 (NM_000888, 604 a.a. ~ 707 a.a) partial recombinant protein with GST tag. MW of the GST tag alone is 26 KDa.
Sequence:	CTNPGASGPT CERCPTCGDP CNSKRSCIEC HLSAAGQARE ECVDKCKLAG ATISEEEDFS KDGVSVCSLQ GENECLITFL ITTDNEGKTI IHSINEKDCP KPPN
Clone:	4C3
Isotype:	IgG2a
Cross-Reactivity:	Human
Characteristics:	Antibody Reactive Against Recombinant Protein.

## Target Details

Target:	ITGB6
Alternative Name:	ITGB6 ( <a href="#">ITGB6 Products</a> )
Background:	Full Gene Name: integrin, beta 6 Synonyms:
Gene ID:	3694
NCBI Accession:	<a href="#">NM_000888</a>

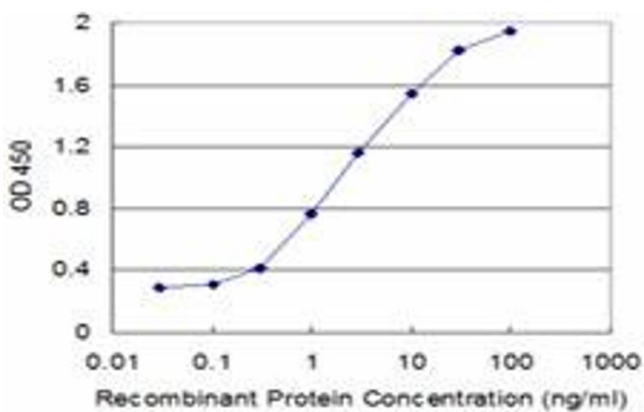
## Application Details

Application Notes:	Optimal working dilution should be determined by the investigator.
Restrictions:	For Research Use only

## Handling

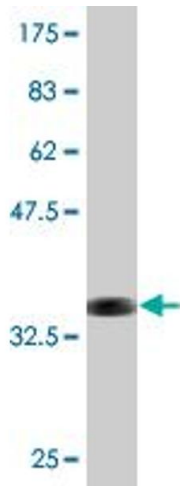
Buffer:	In 1x PBS, pH 7.4
Handling Advice:	Aliquot to avoid repeated freezing and thawing.
Storage:	-20 °C
Storage Comment:	Store at -20°C or lower. Aliquot to avoid repeated freezing and thawing.

## Images



### ELISA

**Image 1.** Detection limit for recombinant GST tagged ITGB6 is approximately 0.03ng/ml as a capture antibody.



### Western Blotting

**Image 2.** Western Blot detection against Immunogen (37.18 kDa).