



[Go to Product page](#)

Datasheet for ABIN517300
anti-JUP antibody (AA 1-745)

2 Images

Overview

Quantity:	100 µg
Target:	JUP
Binding Specificity:	AA 1-745
Reactivity:	Human
Host:	Rabbit
Clonality:	Polyclonal
Conjugate:	This JUP antibody is un-conjugated
Application:	Western Blotting (WB), Proximity Ligation Assay (PLA)

Product Details

Purpose:	Rabbit polyclonal antibody raised against a full-length human JUP protein.
Immunogen:	JUP (NP_002221.1, 1 a.a. ~ 745 a.a) full-length human protein.
Sequence:	MEVMNLMEQP IKVTEWQQTY TYDSGIHSGA NTCVPSVSSK GIMEEDEACG RQYTLKKT YTQGVPPSQG DLEYQMSTTA RAKRVREAMC PGVSGEDSSL LLATQVEGQA TNLQRLAEP QLKSAIVHL INYQDDAELA TRALPELTKL LNDEDPVVVT KAAMIVNQLS KKEASRRALM GSPQLVAAVV RTMQNTSDLD TARCTTSILH NLSHHREGLL AIFKSGGIPA LVRMLSSPVE SVLFYAITTL HNLLLYQEGA KMAVRLADGL QKMVPLLKNK NPKFLAITTD CLQLLAYGNQ ESKLIILANG GPQALVQIMR NYSYEKLLWT TSRVLKVLVS CPSNKPAIVE AGGMQALGKH LTSNSPRLVQ NCLWTLRNL DVATKQEGLE SVLKILVNQL SVDDVNVLTG ATGTLSNLTG NNSKNKTLVT QNSGVEALIH AILRAGDKDD ITEPAVCALR HLTSRHPEAE MAQNSVRLNY GIPAIVKLLN QPNQWPLVKA TIGLIRNLAL CPANHAPLQE AAVIPRLVQL LVKAHQDAQR HVAAGTQQPY TDGVRMEEIV EGCTGALHIL ARDPMNRMEI FRLNTIPLFV QLLYSSVENI

Product Details

QRVAAGVLCE LAQDKEAADA IDAEGASAPL MELLHSRNEG TATYAAAVLF RISEDKNPDY
RKRVSVELTN SLFKHDPAAW EAAQSMIPIN EPYGDDMDAT YRPMYSSDVP LDPLEMHMDM
DGDYPIDTYS DGLRPPYPTA DHMLA

Cross-Reactivity: Human

Characteristics: Antibody reactive against mammalian transfected lysate.

Target Details

Target: JUP

Alternative Name: JUP ([JUP Products](#))

Background: Full Gene Name: junction plakoglobin
Synonyms: ARVD12,CTNNG,DP3,DPIII,PDGB,PKGB

Gene ID: 3728

NCBI Accession: [NM_002230](#)

Pathways: [Cell-Cell Junction Organization, Maintenance of Protein Location](#)

Application Details

Application Notes: Optimal working dilution should be determined by the investigator.

Restrictions: For Research Use only

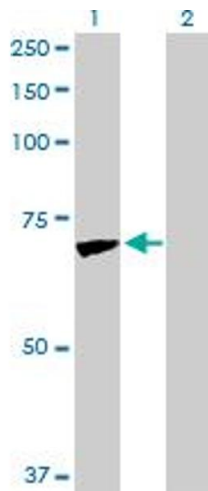
Handling

Buffer: In 1x PBS, pH 7.4

Handling Advice: Aliquot to avoid repeated freezing and thawing.

Storage: -20 °C

Storage Comment: Store at -20°C or lower. Aliquot to avoid repeated freezing and thawing.

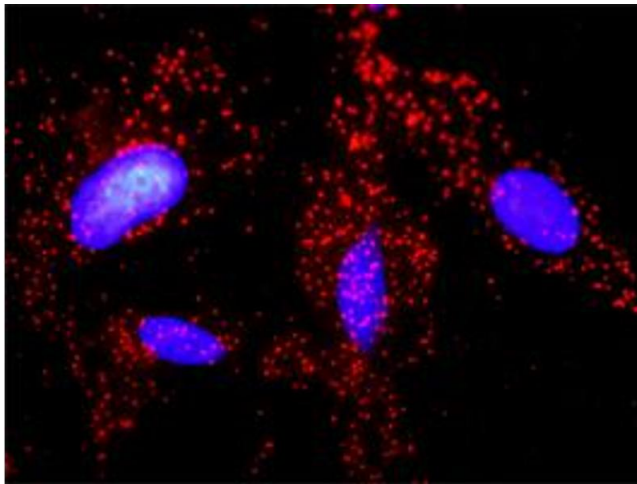


Western Blotting

Image 1. Western Blot analysis of JUP expression in transfected 293T cell line by JUP MaxPab polyclonal antibody.

Lane 1: JUP transfected lysate(81.70 KDa).

Lane 2: Non-transfected lysate.



Proximity Ligation Assay

Image 2. Proximity Ligation Analysis of protein-protein interactions between JUP and APC. HeLa cells were stained with anti-JUP rabbit purified polyclonal 1:1200 and anti-APC mouse monoclonal antibody 1:50. Each red dot represents the detection of protein-protein interaction complex, and nuclei were counterstained with DAPI (blue).