



[Go to Product page](#)

Datasheet for ABIN517310
anti-KCNE1 antibody (AA 1-129)

1 Image

Overview

Quantity:	50 µL
Target:	KCNE1
Binding Specificity:	AA 1-129
Reactivity:	Human
Host:	Mouse
Clonality:	Polyclonal
Conjugate:	This KCNE1 antibody is un-conjugated
Application:	Western Blotting (WB)

Product Details

Purpose:	Mouse polyclonal antibody raised against a full-length human KCNE1 protein.
Immunogen:	KCNE1 (NP_000210.2, 1 a.a. ~ 129 a.a) full-length human protein.
Sequence:	MILSNTTAVT PFLTKLWQET VQQGGNMSGL ARRSRSSDG KLEALYVLMV LGFFGFFTLG IMLSYIRSKK LEHSNDPFNV YIESDAWQEK DKAYVQARVL ESYRSCYVVE NHLAIEQPNT HLPETKPSP
Cross-Reactivity:	Human
Characteristics:	Antibody reactive against mammalian transfected lysate.

Target Details

Target:	KCNE1
---------	-------

Target Details

Alternative Name:	KCNE1 (KCNE1 Products)
Background:	Full Gene Name: potassium voltage-gated channel, Isk-related family, member 1 Synonyms: FLJ18426,FLJ38123,FLJ94103,ISK,JLNS,JLNS2,LQT2/5,LQT5,MGC33114,MinK
Gene ID:	3753
NCBI Accession:	NM_000219
Pathways:	Sensory Perception of Sound

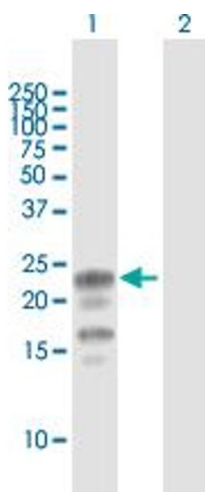
Application Details

Application Notes:	Optimal working dilution should be determined by the investigator.
Restrictions:	For Research Use only

Handling

Format:	Liquid
Buffer:	No additive
Preservative:	Without preservative
Handling Advice:	Aliquot to avoid repeated freezing and thawing.
Storage:	-20 °C
Storage Comment:	Store at -20°C or lower. Aliquot to avoid repeated freezing and thawing.

Images



Western Blotting

Image 1. Western Blot analysis of KCNE1 expression in transfected 293T cell line by KCNE1 MaxPab polyclonal antibody.

Lane 1: KCNE1 transfected lysate(14.19 KDa).

Lane 2: Non-transfected lysate.