



[Go to Product page](#)

Datasheet for ABIN517314
anti-KCNE1 antibody (AA 1-105)

2 Images

Overview

Quantity:	100 µg
Target:	KCNE1
Binding Specificity:	AA 1-105
Reactivity:	Human
Host:	Mouse
Clonality:	Monoclonal
Conjugate:	This KCNE1 antibody is un-conjugated
Application:	ELISA, Immunoprecipitation (IP)

Product Details

Purpose:	Mouse monoclonal antibody raised against a full length recombinant KCNE1.
Immunogen:	KCNE1 (AAH36452, 1 a.a. ~ 105 a.a) full-length recombinant protein with GST tag. MW of the GST tag alone is 26 KDa.
Sequence:	MILSNTTAVT PFLTKLWQET VQQGGMMSGL AHRSPRSGDG KLEALYVLMV LGFFGFFTLG IMLSYIRSKK LEHSNDPFNV YIESDAWQEK DKAYVQARVL ESYRS
Clone:	2A6
Isotype:	IgG2a
Cross-Reactivity:	Human
Characteristics:	Antibody Reactive Against Recombinant Protein.

Target Details

Target:	KCNE1
Alternative Name:	KCNE1 (KCNE1 Products)
Background:	Full Gene Name: potassium voltage-gated channel, Isk-related family, member 1 Synonyms: FLJ18426,FLJ38123,FLJ94103,ISK,JLNS,JLNS2,LQT2/5,LQT5,MGC33114,MinK
Gene ID:	3753
Pathways:	Sensory Perception of Sound

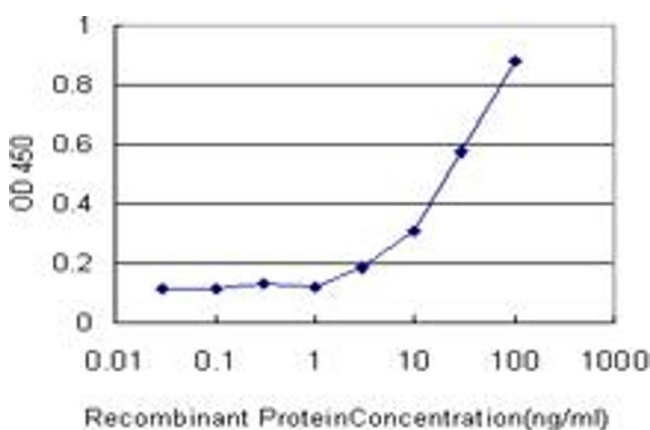
Application Details

Application Notes:	Optimal working dilution should be determined by the investigator.
Restrictions:	For Research Use only

Handling

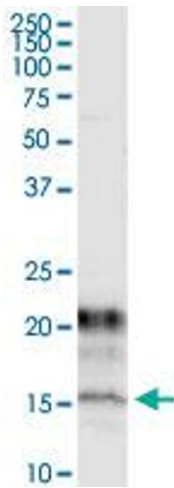
Buffer:	In 1x PBS, pH 7.4
Handling Advice:	Aliquot to avoid repeated freezing and thawing.
Storage:	-20 °C
Storage Comment:	Store at -20°C or lower. Aliquot to avoid repeated freezing and thawing.

Images



ELISA

Image 1. Detection limit for recombinant GST tagged KCNE1 is approximately 3ng/ml as a capture antibody.



Western Blotting

Image 2. Immunoprecipitation of KCNE1 transfected lysate using anti-KCNE1 monoclonal antibody and Protein A Magnetic Bead , and immunoblotted with KCNE1 MaxPab rabbit polyclonal antibody.