



[Go to Product page](#)

Datasheet for ABIN517324
anti-KEL antibody (AA 633-732)

1 Image

Overview

Quantity:	100 µg
Target:	KEL
Binding Specificity:	AA 633-732
Reactivity:	Human
Host:	Mouse
Clonality:	Monoclonal
Conjugate:	This KEL antibody is un-conjugated
Application:	ELISA

Product Details

Purpose:	Mouse monoclonal antibody raised against a partial recombinant KEL.
Immunogen:	KEL (NP_000411.1, 633 a.a. ~ 732 a.a) partial recombinant protein with GST tag. MW of the GST tag alone is 26 KDa.
Sequence:	LENAADVGGAL AIALQAYSKR LLRHHGETVL PSLDLSPQQI FFRSYAQVMC RKPSQDSHD THSPPHLRVH GPLSSTPAFA RYFRCARGAL LNPSSRCQLW
Clone:	4B10
Isotype:	IgG2a
Cross-Reactivity:	Human
Characteristics:	Antibody Reactive Against Recombinant Protein.

Target Details

Target:	KEL
Alternative Name:	KEL (KEL Products)
Background:	Full Gene Name: Kell blood group, metallo-endopeptidase Synonyms: CD238,ECE3
Gene ID:	3792
NCBI Accession:	NM_000420

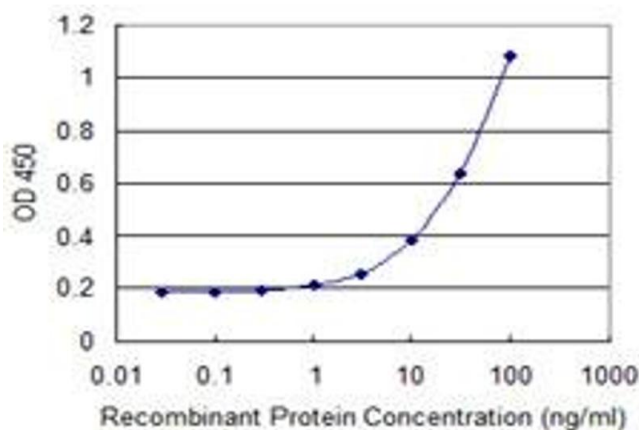
Application Details

Application Notes:	Optimal working dilution should be determined by the investigator.
Restrictions:	For Research Use only

Handling

Buffer:	In 1x PBS, pH 7.4
Handling Advice:	Aliquot to avoid repeated freezing and thawing.
Storage:	-20 °C
Storage Comment:	Store at -20°C or lower. Aliquot to avoid repeated freezing and thawing.

Images



ELISA

Image 1. Detection limit for recombinant GST tagged KEL is 1 ng/ml as a capture antibody.