



Datasheet for ABIN517332
anti-KIFC3 antibody (AA 1-687)



[Go to Product page](#)

2 Images

Overview

Quantity:	50 µg
Target:	KIFC3
Binding Specificity:	AA 1-687
Reactivity:	Human
Host:	Mouse
Clonality:	Polyclonal
Conjugate:	This KIFC3 antibody is un-conjugated
Application:	Western Blotting (WB), Immunofluorescence (IF)

Product Details

Purpose:	Mouse polyclonal antibody raised against a full-length human KIFC3 protein.
Immunogen:	KIFC3 (AAH34234.1, 1 a.a. ~ 687 a.a) full-length human protein.
Sequence:	MVENERLRQE MRRCEALQE LRTKPAGPCP GCEHSQESQA LRDKLPQLQL EMAESKGMLS ELNLEVQKKT DRLAEVELRL KDCLAEKAQE EERLSRRLRD SHETIASLRA QSPPVKYVIK TVEVESSKTK QALSESQARN QHLQEQVAMQ RQVLKEMEQQ LQSSHQLTAR LRAQIAMYES ELERAHQML EEMQSLEEDK NRAIEEFAR AQVEMKAVHE NLAGVRTNLL TLQPALRTL NDYNGLRQV RGFPLLLQEA LRSVKAEIGQ AIEEVNSNNQ ELLRKYRREL QLRKKCHNEL VRLKGNIRVI ARVRPVTKED GEGPEATNAV TFDADDDSI HLLHKGKPV FELDQVDFSPQ ASQQDVFEV QALVTSCIDG FNVCFAYGQ TGAGKTYTME GTAENPGINQ RALQLLFSEV QEKASDWEYT ITVSAAEIYN EVLRDLLGKE PQEKLEIRLC PDGSGQLYVP GLTEFQVQSV DDINKVFEFG HTNRTTEFTN LNEHSSRSA LLIVTVRGVD CSTGLRTTGK LNLVDLAGSE RVGKSGAEGS RLREAHQINK SLSALGDVIA ALRSRQGHVP FRNSKLTLYLL QDSLGGSKT

Product Details

LMVVQVSPVE KNTSETLYSL KFAERVRSVE LGPGLRRAEL GSWSSQEHLE WEPACQTPQP
SARAHSAPSS GTSSRPGSIR RKLQPSA

Cross-Reactivity: Human

Characteristics: Antibody reactive against mammalian transfected lysate.

Target Details

Target: KIFC3

Alternative Name: KIFC3 ([KIFC3 Products](#))

Background: Full Gene Name: kinesin family member C3

Synonyms: DKFZp686D23201,FLJ34694

Gene ID: 3801

Pathways: [Cell-Cell Junction Organization](#)

Application Details

Application Notes: Optimal working dilution should be determined by the investigator.

Restrictions: For Research Use only

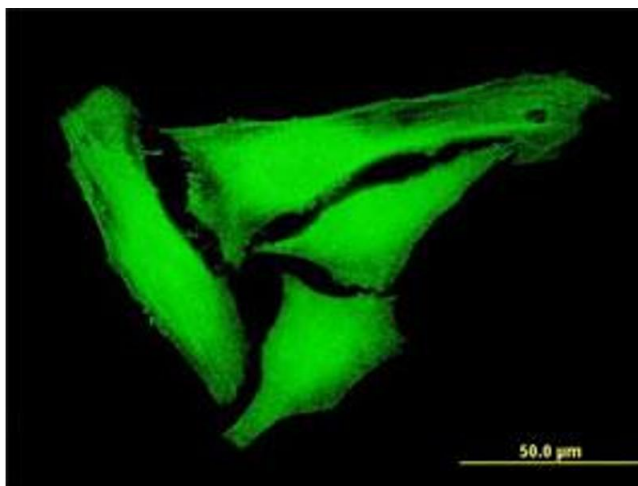
Handling

Buffer: In 1x PBS, pH 7.4

Handling Advice: Aliquot to avoid repeated freezing and thawing.

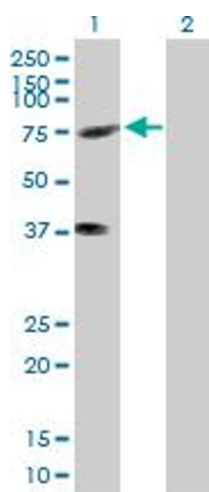
Storage: -20 °C

Storage Comment: Store at -20°C or lower. Aliquot to avoid repeated freezing and thawing.



Immunofluorescence

Image 1. Immunofluorescence of purified MaxPab antibody to KIFC3 on HeLa cell. (antibody concentration 10 μ g/mL)



Western Blotting

Image 2. Western Blot analysis of KIFC3 expression in transfected 293T cell line by KIFC3 MaxPab polyclonal antibody.

Lane 1: KIFC3 transfected lysate(75.57 KDa).

Lane 2: Non-transfected lysate.