



[Go to Product page](#)

Datasheet for ABIN517339

anti-KIR3DL1 antibody (AA 1-382)

1 Image

Overview

Quantity:	100 µg
Target:	KIR3DL1
Binding Specificity:	AA 1-382
Reactivity:	Human
Host:	Rabbit
Clonality:	Polyclonal
Conjugate:	This KIR3DL1 antibody is un-conjugated
Application:	Western Blotting (WB)

Product Details

Purpose:	Rabbit polyclonal antibody raised against a full-length human KIR3DL1 protein.
Immunogen:	KIR3DL1 (NP_001077008.1, 1 a.a. ~ 382 a.a) full-length human protein.
Sequence:	MLLMVSMAC VGLFLVQRAG PHMGGQDKPF LSAWPSAVVP RGGHVTLRCH YRHRFNNFML YKEDRIHVPI FHGRIFQEGF NMSPVTTAHA GNYTCRGSHP HSPTGWSAPS NPMVIMVTGN HRKPSLLAHP GPLVKSGERV ILQCWSDIMF EHFFLHKEWI SKDPSRLVGQ IHDGVSKANF SIGSMRALA GTYRCYGSVT HTPYQLSAPS DPLDIVVTGL YEKPSLSAQF GPKVQAGESV TLSCSSRSSY DMYHLSREGG AHERRLPAVR KVNRTFQADF PLGPATHGGT YRCFGSFRHS PYEWSDPSPD LLVSVTGNPS SSWPSPTEPS SKSGNLRHLH ILIGTSVVKI PFTILLFFLL HRWCSNKKKC CCNGPRACRE QK
Cross-Reactivity:	Human
Characteristics:	Antibody reactive against mammalian transfected lysate.

Target Details

Target:	KIR3DL1
Alternative Name:	KIR3DL1 (KIR3DL1 Products)
Background:	Full Gene Name: killer cell immunoglobulin-like receptor, three domains, long cytoplasmic tail, 1 Synonyms: CD158E1,KIR,MGC119726,MGC119728,MGC126589,MGC126591,NKAT3,NKB1,NKB1B
Gene ID:	3811

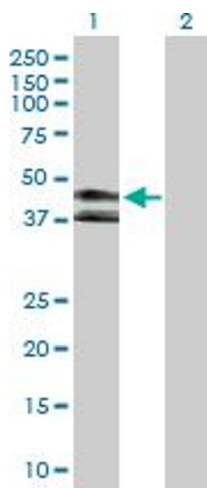
Application Details

Application Notes:	Optimal working dilution should be determined by the investigator.
Restrictions:	For Research Use only

Handling

Buffer:	In 1x PBS, pH 7.4
Handling Advice:	Aliquot to avoid repeated freezing and thawing.
Storage:	-20 °C
Storage Comment:	Store at -20°C or lower. Aliquot to avoid repeated freezing and thawing.

Images



Western Blotting

Image 1. Western Blot analysis of KIR3DL1 expression in transfected 293T cell line by KIR3DL1 MaxPab polyclonal antibody.

Lane 1: KIR3DL1 transfected lysate(42.40 kDa).

Lane 2: Non-transfected lysate.