



Datasheet for ABIN517356
anti-KLRC1 antibody (AA 1-233)



[Go to Product page](#)

3 Images

Overview

Quantity:	100 µg
Target:	KLRC1
Binding Specificity:	AA 1-233
Reactivity:	Human
Host:	Rabbit
Clonality:	Polyclonal
Conjugate:	This KLRC1 antibody is un-conjugated
Application:	Western Blotting (WB)

Product Details

Purpose:	Rabbit polyclonal antibody raised against a full-length human KLRC1 protein.
Immunogen:	KLRC1 (NP_002250.1, 1 a.a. ~ 233 a.a) full-length human protein.
Sequence:	MDNQGVYSD LNLPPNPKRQ QRKPKGNKSS ILATEQEITY AELNLQKASQ DFQGNDKTYH CKDLPSAPEK LIVGILGIIC LILMASVVTI WVIPSTLIQR HNNSSLNTRT QKARHCGHCP EEWITYNSNC YYIGKERRTW EESLLACTSK NSSLLSIDNE EEMKFLSIIS PSSWIGVFRN SSHHPWVTMN GLAFKHEIKD SDNAELNCAV LQVNRKLSAQ CGSSIIYHCK HKL
Cross-Reactivity:	Human, Mouse
Characteristics:	Antibody reactive against mammalian transfected lysate.

Target Details

Target:	KLRC1
---------	-------

Target Details

Alternative Name:	KLRC1 (KLRC1 Products)
Background:	Full Gene Name: killer cell lectin-like receptor subfamily C, member 1 Synonyms: CD159A,MGC13374,MGC59791,NKG2,NKG2A
Gene ID:	3821
NCBI Accession:	NM_002259

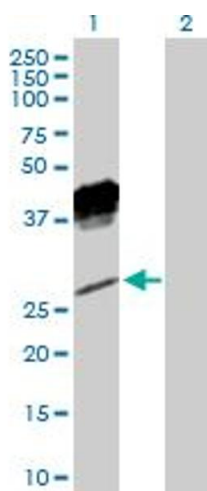
Application Details

Application Notes:	Optimal working dilution should be determined by the investigator.
Restrictions:	For Research Use only

Handling

Buffer:	In 1x PBS, pH 7.4
Handling Advice:	Aliquot to avoid repeated freezing and thawing.
Storage:	-20 °C
Storage Comment:	Store at -20°C or lower. Aliquot to avoid repeated freezing and thawing.

Images

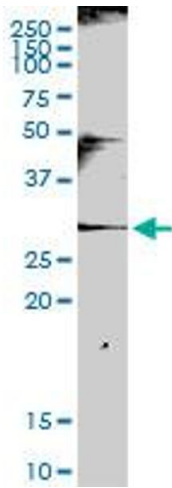


Western Blotting

Image 1. Western Blot analysis of KLRC1 expression in transfected 293T cell line by KLRC1 MaxPab polyclonal antibody.

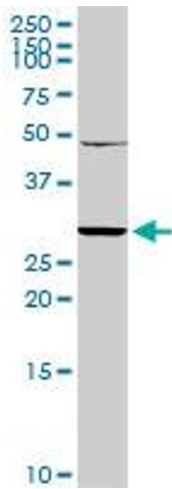
Lane 1: KLRC1 transfected lysate(26.30 kDa).

Lane 2: Non-transfected lysate.



Western Blotting

Image 2. KLRC1 MaxPab rabbit polyclonal antibody. Western Blot analysis of KLRC1 expression in human spleen.



Western Blotting

Image 3. KLRC1 MaxPab rabbit polyclonal antibody. Western Blot analysis of KLRC1 expression in mouse testis.