



[Go to Product page](#)

Datasheet for ABIN517358
anti-KLRC2 antibody (AA 1-231)

1 Image

Overview

Quantity:	50 µg
Target:	KLRC2
Binding Specificity:	AA 1-231
Reactivity:	Human
Host:	Mouse
Clonality:	Polyclonal
Conjugate:	This KLRC2 antibody is un-conjugated
Application:	Western Blotting (WB)

Product Details

Purpose:	Mouse polyclonal antibody raised against a full-length human KLRC2 protein.
Immunogen:	KLRC2 (AAH93644.1, 1 a.a. ~ 231 a.a) full-length human protein.
Sequence:	MSKQRGTFSE VSLAQDPKRQ QRKPKGNKSS ISGTEQEIFQ VELNLQNPSL NHQGIDKIYD CQGLLPPEK LTAEVLGIIC IVLMATVLKT IVLIPFLEQN NSSPNTRTQK ARHCGHCPEE WITYSNSCY YIGKERRTWE E SLLACTSKNS SLLSIDNEEE MKFLASILPS SWIGVFRNSS HHPWVTINGL AFKHKIKDSD NAELNCAVLQ VNRLKSAQC G SSMIYHCKHK L
Cross-Reactivity:	Human
Characteristics:	Antibody reactive against mammalian transfected lysate.

Target Details

Target:	KLRC2
---------	-------

Target Details

Alternative Name:	KLRC2 (KLRC2 Products)
Background:	Full Gene Name: killer cell lectin-like receptor subfamily C, member 2 Synonyms: CD159c,MGC138244,NKG2-C,NKG2C
Gene ID:	3822

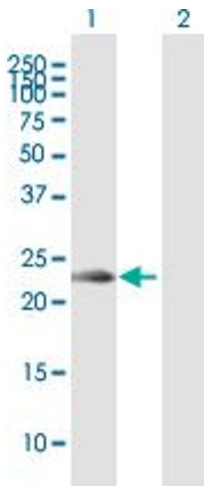
Application Details

Application Notes:	Optimal working dilution should be determined by the investigator.
Restrictions:	For Research Use only

Handling

Buffer:	In 1x PBS, pH 7.4
Handling Advice:	Aliquot to avoid repeated freezing and thawing.
Storage:	-20 °C
Storage Comment:	Store at -20°C or lower. Aliquot to avoid repeated freezing and thawing.

Images



Western Blotting

Image 1. Western Blot analysis of KLRC2 expression in transfected 293T cell line by KLRC2 MaxPab polyclonal antibody.

Lane 1: KLRC2 transfected lysate(26.10 KDa).

Lane 2: Non-transfected lysate.