

Datasheet for ABIN517364  
**anti-KLC1 antibody (AA 1-560)**



[Go to Product page](#)

2 Images

Overview

Quantity:	50 µg
Target:	KLC1
Binding Specificity:	AA 1-560
Reactivity:	Human
Host:	Mouse
Clonality:	Polyclonal
Conjugate:	This KLC1 antibody is un-conjugated
Application:	Western Blotting (WB)

Product Details

Purpose:	Mouse polyclonal antibody raised against a full-length human KLC1 protein.
Immunogen:	KLC1 (NP_005543.2, 1 a.a. ~ 560 a.a) full-length human protein.
Sequence:	<p>MYDNMSTMVY IKEDKLEKLT QDEIISKTKQ VIQGLEALKN EHNSILQSLLETLKCLKKDD          ESNLVEEKSNI MIRKSLEMLE LGLSEAQVMM ALSNHLNAVE SEKQLRAQV RRLCQENQWL          RDELANTQQK LQKSEQSVAQ LEEEEKHLEF MNQLKKYDDD ISPEKD KTD STKEPLDDLF          PNDEDDPGQG IQQQHSSAAA AAQQGGYEIP ARLRTLHNLV IQYASQGRYE VAVPLCKQAL          EDLEKTS GHD HPDVATMLNI LALVYRDQNK YKDAANLLND ALAIREKTLG KDHPAVAATL          NNLA VLYGKR GKYKEAEPLC KRALEIREKV LGKDHPDVAK QLNNLALLCQ NQGKYEEVEY          YYQRALEIYQ TKLGPDDPNV AKTKNNLASC YLQKQKFKQA ETLYKEILTR AHEREFGSVD          DENKPIWMHA EERECKGKQ KDGTSFG EYG GWYKACKVDS PTVTTTTLKNL GALYRRQGKF          EAAETLEAAA MRSRKQGLDN VHKQRVAEVL NDPENMEKRR SRESLNVDVV KYESGPDGGE          EVSMSVEWNG MRKMKLGLVN</p>

## Product Details

---

Cross-Reactivity:	Human, Rat
Characteristics:	Antibody reactive against mammalian transfected lysate.

## Target Details

---

Target:	KLC1
Alternative Name:	KLC1 ( <a href="#">KLC1 Products</a> )
Background:	Full Gene Name: kinesin light chain 1 Synonyms: KLC,KNS2,KNS2A,MGC15245
Gene ID:	3831
NCBI Accession:	<a href="#">NM_005552</a>
Pathways:	<a href="#">Ribonucleoprotein Complex Subunit Organization</a>

## Application Details

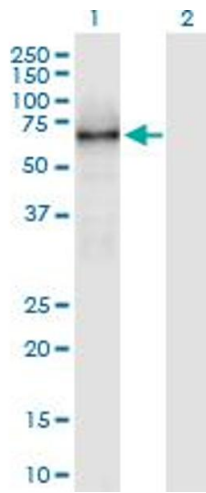
---

Application Notes:	Optimal working dilution should be determined by the investigator.
Restrictions:	For Research Use only

## Handling

---

Buffer:	In 1x PBS, pH 7.4
Handling Advice:	Aliquot to avoid repeated freezing and thawing.
Storage:	-20 °C
Storage Comment:	Store at -20°C or lower. Aliquot to avoid repeated freezing and thawing.

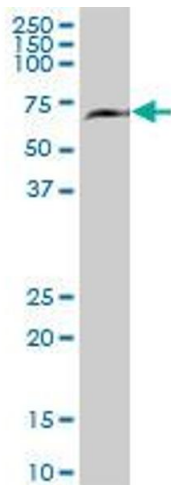


### Western Blotting

**Image 1.** Western Blot analysis of KLC1 expression in transfected 293T cell line by KLC1 MaxPab polyclonal antibody.

Lane 1: KNS2 transfected lysate(61.6 kDa).

Lane 2: Non-transfected lysate.



### Western Blotting

**Image 2.** KNS2 MaxPab polyclonal antibody. Western Blot analysis of KNS2 expression in rat brain.