

Datasheet for ABIN517366  
**anti-KIF22 antibody (AA 1-665)**



[Go to Product page](#)

2 Images

Overview

Quantity:	50 µg
Target:	KIF22
Binding Specificity:	AA 1-665
Reactivity:	Human
Host:	Mouse
Clonality:	Polyclonal
Conjugate:	This KIF22 antibody is un-conjugated
Application:	Western Blotting (WB), Immunofluorescence (IF)

Product Details

Purpose:	Mouse polyclonal antibody raised against a full-length human KIF22 protein.
Immunogen:	KIF22 (NP_015556.1, 1 a.a. ~ 665 a.a) full-length human protein.
Sequence:	<p>MAAGGSTQQR RREMAAASAA AISGAGRCRL SKIGATRRPP PARVRVAVRL RPFVDGTAGA  SDPPCVRGMD SCSLEIANWR NHQETLKYQF DAFYGERSTQ QDIYAGSVQP ILRHLLLEGQN  ASVLAYGPTG AGKTHTMLGS PEQPGVIPRA LMDLLQLTRE EGAEGRPWAL SVTMSYLEIY  QEKVLDLLDP ASGDLVIREDCRGNILIPGL SQKPISSFAD FERHFLPASR NRTVGATRLN  QRSSRSHAVL LVKVDQRERL APFRQREGKL YLIDLAGED NRRTGNKGLR LKESGAINTS  LFVLGKVDA LNQGLPRVPY RDSKLTRLLQ DSLGGSASHSI LIANIAPERR FYLDTVSALN  FAARSKEVIN RPFTNESLQP HALGPKLSQ KELLGPPEAK RARGPEEEEEI GSPEPMAAPA  SASQKLSPLQ KLSSMDPAML ERLSLDRLL ASQGSQGAPL LSTPKRERMV LMKTVEEKDL  EIERLKTQKQ ELEAKMLAQK AEEKENHCPT MLRPLSHRTV TGAKPLKKAV VMPLQLIQEQ  AASPNAEIH I LKNKGRKRKL ESLDALEPEE KAEDCWELQI SPELLAHGRQ KILLDLLNEGS</p>

## Product Details

---

ARDLRSLQRI GPKKAQLIVG WRELHGPFSSQ VEDLERVEGI TGKQMESFLK ANILGLAAGQ RCGAS

---

Cross-Reactivity: Human

---

Characteristics: Antibody reactive against mammalian transfected lysate.

---

## Target Details

---

Target: KIF22

---

Alternative Name: KIF22 ([KIF22 Products](#))

---

Background: Full Gene Name: kinesin family member 22  
Synonyms: KID,KNL4,OBP,OBP-1,OBP-2

---

Gene ID: 3835

---

NCBI Accession: [NM\\_007317](#)

---

## Application Details

---

Application Notes: Optimal working dilution should be determined by the investigator.

---

Restrictions: For Research Use only

---

## Handling

---

Buffer: In 1x PBS, pH 7.4

---

Handling Advice: Aliquot to avoid repeated freezing and thawing.

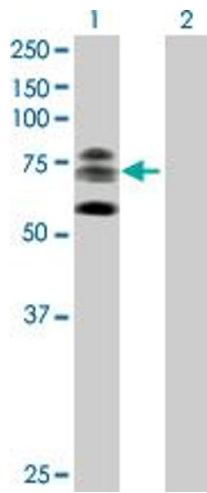
---

Storage: -20 °C

---

Storage Comment: Store at -20°C or lower. Aliquot to avoid repeated freezing and thawing.

---

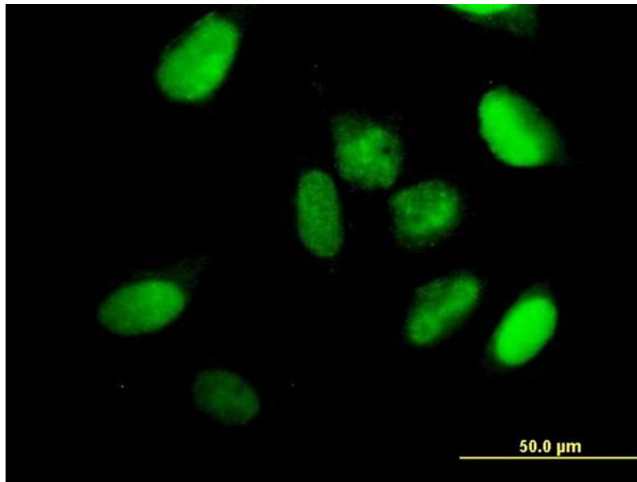


### Western Blotting

**Image 1.** Western Blot analysis of KIF22 expression in transfected 293T cell line by KIF22 MaxPab polyclonal antibody.

Lane 1: KIF22 transfected lysate(73.15 kDa).

Lane 2: Non-transfected lysate.



### Immunofluorescence

**Image 2.** Immunofluorescence of purified MaxPab antibody to KIF22 on HeLa cell. [antibody concentration 10 ug/ml]