

Datasheet for ABIN517382  
**anti-Cytokeratin 5 antibody (AA 1-590)**



[Go to Product page](#)

3 Images

Overview

Quantity:	100 µg
Target:	Cytokeratin 5 (KRT5)
Binding Specificity:	AA 1-590
Reactivity:	Human
Host:	Mouse
Clonality:	Monoclonal
Conjugate:	This Cytokeratin 5 antibody is un-conjugated
Application:	Western Blotting (WB), ELISA, Immunoprecipitation (IP)

Product Details

Purpose:	Mouse monoclonal antibody raised against a full-length recombinant KRT5.
Immunogen:	KRT5 (AAH24292, 1 a.a. ~ 590 a.a) full-length recombinant protein with GST tag. MW of the GST tag alone is 26 KDa.
Sequence:	MSRQSSVSFR SGGSRSFSTA SAITPSVSRT SFTSVSRSGG GGGGGFGRVS LAGACGVGGY GSRSLYNLGG SKRISISTSG GSFRNRFGAG AGGGYGFGGG AGSGFGFGGG AGGGFGLGGG AGFGGGFGGP GFPVCPGGI QEVTVNQSLT TPLNLQIDPS IQRVRTEERE QIKTLNNKFA SFIDKVRFLQ QQNKVLDTKW TLLQEQGTKT VRQNLEPLFE QYINNLRRQL DSIVGERGRL DSELRNMQDL VEDFKNKYED EINKRTTAEN EFVMLKKDVD AAYMNKVELE AKVDALMDEI NFMKMFDAE LSQMQTHVSD TSVVLSMDNN RNLDLDSIIA EVKAQYEEIA NRSRTEAESW YQTKYEELQQ TAGRHGDDL RNTKHEISEMN RMIQRLRAEI DNVKKQCANL QNAIADAEQR GELALKDARN KLAELEEALQ KAKQDMARLL REYQELMNTK LALDVEIATY RKLLEGECCR LSGEGVGPVN ISVVTGSVSS GYGSGSGYGG GLGGGLGGGL GGGLAGGGSG SYSSSSSGGV

## Product Details

---

GLSGGLSVGG SGFSASSGRG LGVFGSGGG SSSSVKQVST TSSSRKSFKS

Clone: 1A12

Isotype: IgG2a

Cross-Reactivity: Human

Characteristics: Antibody Reactive Against Recombinant Protein.

## Target Details

---

Target: Cytokeratin 5 (KRT5)

Alternative Name: KRT5 ([KRT5 Products](#))

Background: Full Gene Name: keratin 5  
Synonyms: CK5,DDD,EBS2,K5,KRT5A

Gene ID: 3852

## Application Details

---

Application Notes: Optimal working dilution should be determined by the investigator.

Restrictions: For Research Use only

## Handling

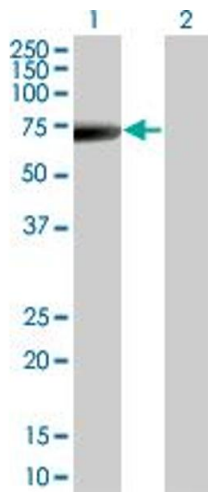
---

Buffer: In 1x PBS, pH 7.4

Handling Advice: Aliquot to avoid repeated freezing and thawing.

Storage: -20 °C

Storage Comment: Store at -20°C or lower. Aliquot to avoid repeated freezing and thawing.

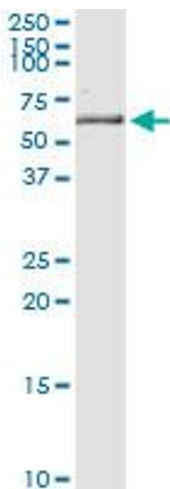


### Western Blotting

**Image 1.** Western Blot analysis of KRT5 expression in transfected 293T cell line by KRT5 monoclonal antibody (M08), clone 1A12.

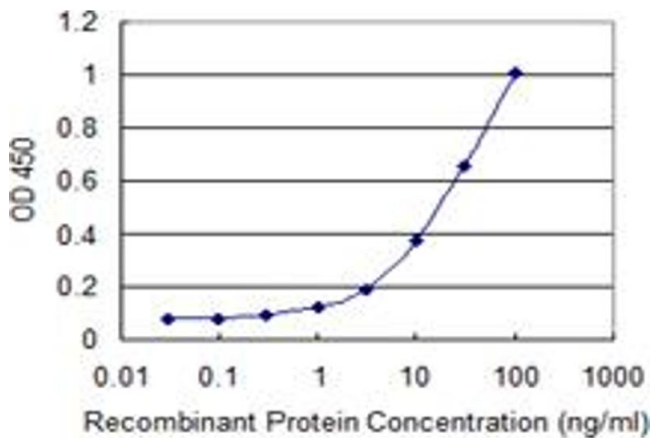
Lane 1: KRT5 transfected lysate(62.4 kDa).

Lane 2: Non-transfected lysate.



### Western Blotting

**Image 2.** Immunoprecipitation of KRT5 transfected lysate using anti-KRT5 monoclonal antibody and Protein A Magnetic Bead, and immunoblotted with KRT5 MaxPab rabbit polyclonal antibody.



### ELISA

**Image 3.** Detection limit for recombinant GST tagged KRT5 is 0.3 ng/ml as a capture antibody.