

Datasheet for ABIN517384  
**anti-Cytokeratin 7 antibody (AA 1-469)**



[Go to Product page](#)

3 Images

## Overview

Quantity:	50 µg
Target:	Cytokeratin 7 (KRT7)
Binding Specificity:	AA 1-469
Reactivity:	Human
Host:	Mouse
Clonality:	Polyclonal
Conjugate:	This Cytokeratin 7 antibody is un-conjugated
Application:	Western Blotting (WB), Immunofluorescence (IF)

## Product Details

Purpose:	Mouse polyclonal antibody raised against a full-length human KRT7 protein.
Immunogen:	KRT7 (AAH02700.1, 1 a.a. ~ 469 a.a) full-length human protein.
Sequence:	MSIHFSSPVF TSRSAAFSGR GAQVRLSSAR PGGLGSSSLY GLGASRPRVA VRSAYGGPVG AGIREVTINQ SLLAPLRLDA DPQLQRVRQE ESEQIKTLNN KFASFIDKVR FLEQQNKLLE TKWTLLEQEQ SAKSSRLPDI FEAQIAGLRG QLEALQVDGG RLEAELRSMQ DVVEDFKNKY EDEINRRRTAA ENFVVLKKD VDAAYMSKVE LEAKVDALND EINFLRTLNE TELTELQSQI SDTSVVLMSD NSRSLDLGI IAEVKAQYEE MAKCSRAEAE AWYQTKFETL QAQAGKHGDD LRNTRNEISE MNRAIQLQA EIDNIKNQRA KLEAAIAEAE ERGELALKDA RAKQEELEAA LQRAQQDMAR QLREYQELMS VKLALDIEIA TYRKLLEGEE SRLAGDGVGA VNISVMNSTG GSSSGGGIGL TLGGTMGSNA LSFSSSAGPG LLKAYSIRTA SASRRSARD
Cross-Reactivity:	Human

## Product Details

Characteristics: Antibody reactive against mammalian transfected lysate.

## Target Details

Target: Cytokeratin 7 (KRT7)

Alternative Name: KRT7 ([KRT7 Products](#))

Background: Full Gene Name: keratin 7  
Synonyms: CK7,K2C7,K7,MGC129731,MGC3625,SCL

Gene ID: 3855

## Application Details

Application Notes: Optimal working dilution should be determined by the investigator.

Restrictions: For Research Use only

## Handling

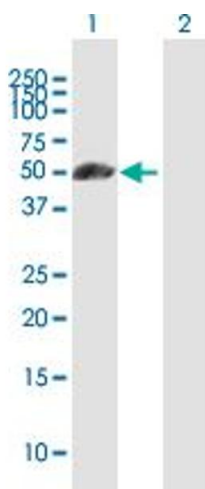
Buffer: In 1x PBS, pH 7.4

Handling Advice: Aliquot to avoid repeated freezing and thawing.

Storage: -20 °C

Storage Comment: Store at -20°C or lower. Aliquot to avoid repeated freezing and thawing.

## Images

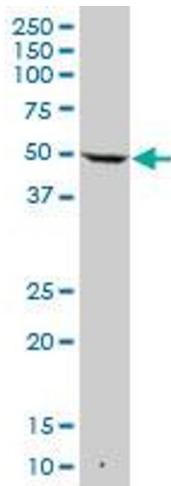


### Western Blotting

**Image 1.** Western Blot analysis of KRT7 expression in transfected 293T cell line by KRT7 MaxPab polyclonal antibody.

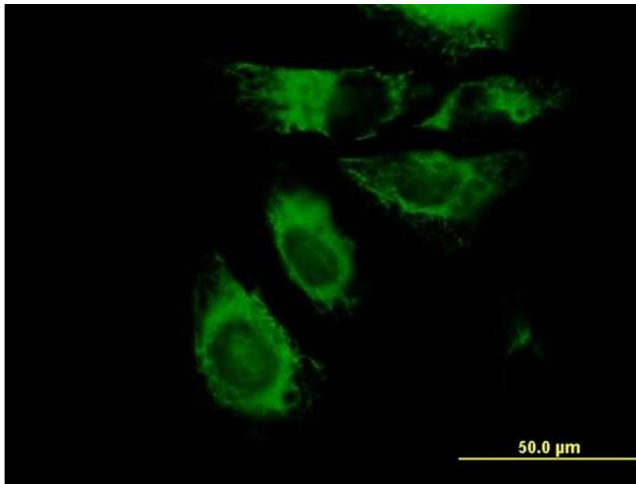
Lane 1: KRT7 transfected lysate(51.59 KDa).

Lane 2: Non-transfected lysate.



### Western Blotting

**Image 2.** KRT7 MaxPab polyclonal antibody. Western Blot analysis of KRT7 expression in human liver.



### Immunofluorescence

**Image 3.** Immunofluorescence of purified MaxPab antibody to KRT7 on HeLa cell. [antibody concentration 10 ug/ml]