

Datasheet for ABIN517391
anti-KRT8 antibody (AA 91-195)



[Go to Product page](#)

4 Images

Overview

Quantity:	100 µg
Target:	KRT8
Binding Specificity:	AA 91-195
Reactivity:	Human
Host:	Mouse
Clonality:	Monoclonal
Conjugate:	This KRT8 antibody is un-conjugated
Application:	Western Blotting (WB), Immunofluorescence (IF), ELISA

Product Details

Purpose:	Mouse monoclonal antibody raised against a partial recombinant KRT8.
Immunogen:	KRT8 (NP_002264, 91 a.a. ~ 195 a.a) partial recombinant protein with GST tag. MW of the GST tag alone is 26 KDa.
Sequence:	EKEQIKTLNN KFAFIDKVR FLEQQNKMLE TKWLLQQQK TARSNMDNMF ESYINNLRRQ LETLGQEKLK LEAELGNMQG LVEDFKNKYE DEINKRTEME NEFVL
Clone:	3E3
Isotype:	IgG2b
Cross-Reactivity:	Human
Characteristics:	Antibody Reactive Against Recombinant Protein.

Target Details

Target:	KRT8
Alternative Name:	KRT8 (KRT8 Products)
Background:	Full Gene Name: keratin 8 Synonyms: CARD2,CK8,CYK8,K2C8,K8,KO
Gene ID:	3856
NCBI Accession:	NM_002273

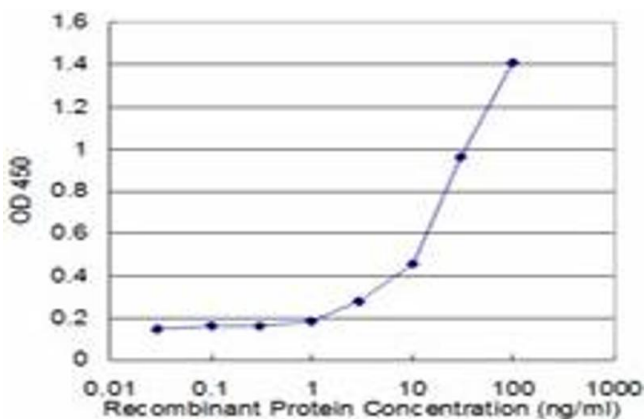
Application Details

Application Notes:	Optimal working dilution should be determined by the investigator.
Restrictions:	For Research Use only

Handling

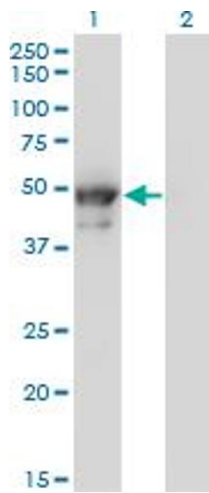
Buffer:	In 1x PBS, pH 7.4
Handling Advice:	Aliquot to avoid repeated freezing and thawing.
Storage:	-20 °C
Storage Comment:	Store at -20°C or lower. Aliquot to avoid repeated freezing and thawing.

Images



ELISA

Image 1. Detection limit for recombinant GST tagged KRT8 is approximately 1ng/ml as a capture antibody.

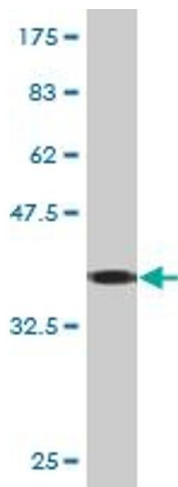


Western Blotting

Image 2. Western Blot analysis of KRT8 expression in transfected 293T cell line by KRT8 monoclonal antibody (M02), clone 3E3.

Lane 1: KRT8 transfected lysate(53.7 kDa).

Lane 2: Non-transfected lysate.



Western Blotting

Image 3. Western Blot detection against Immunogen (37.29 kDa).

Please check the [product details page](#) for more images. Overall 4 images are available for ABIN517391.