



[Go to Product page](#)

Datasheet for ABIN517410  
**anti-KRT32 antibody (AA 1-448)**

3 Images

1 Publication

### Overview

Quantity:	50 µg
Target:	KRT32
Binding Specificity:	AA 1-448
Reactivity:	Human
Host:	Mouse
Clonality:	Polyclonal
Conjugate:	This KRT32 antibody is un-conjugated
Application:	Western Blotting (WB)

### Product Details

Purpose:	Mouse polyclonal antibody raised against a full-length human KRTHA2 protein.
Immunogen:	KRTHA2 (AAI48741.1, 1 a.a. ~ 448 a.a) full-length human protein.
Sequence:	MTSSCCVTNN LQASLKSCPR PASVCSSGVN CRPELCLGYV CQPMACLPVS CLPTTFRPAS CLSKTYLSSS CQAASGISGS MGPGSWYSEG AFNGNEKETM QFLNDRLAS Y LTRVRQLEQE NAELESRIQE ASHSQVLTMT PDYQSHFRTI EELQQKILCT KAENARMVVN IDNAKLAADD FRAKYEAELA MRQLVEADIN GLRRILDDLT LCKADLEAQV ESLKEELMCL KKNHEEEVGS LRCQLGDRLN IEVDAAPPVD LTRVLEEMRC QYEAMVEANR RDVEEWFNMQ MEELNQQVAT SSEQLQNYQS DIIDLRRTVN TLEIELQAQH SLRDSLENTL TESEARYSSQ LAQMOCMITN VEAQLAEIRA DLERQNQEYQ VLLDVRARLE GEINTYRSLLE ENEDCKLPCN PCSTPSCCTC VPSPCVPRTV CVPRTVGMPC SPCPQGRY
Cross-Reactivity:	Human

## Product Details

---

Characteristics: Antibody reactive against mammalian transfected lysate.

## Target Details

---

Target: KRT32

Alternative Name: KRT32 ([KRT32 Products](#))

Background: Full Gene Name: keratin 32  
Synonyms: HA2,HKA2,KRTHA2,hHa2

Gene ID: 3882

## Application Details

---

Application Notes: Optimal working dilution should be determined by the investigator.

Restrictions: For Research Use only

## Handling

---

Buffer: In 1x PBS, pH 7.4

Handling Advice: Aliquot to avoid repeated freezing and thawing.

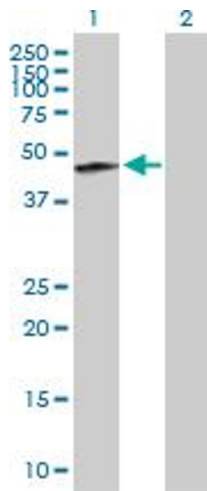
Storage: -20 °C

Storage Comment: Store at -20°C or lower. Aliquot to avoid repeated freezing and thawing.

## Publications

---

Product cited in: Hedegaard, Redondo-Gómez, Tan, Ng, Loessner, Mata: "Peptide-protein coassembling matrices as a biomimetic 3D model of ovarian cancer." in: **Science advances**, Vol. 6, Issue 40, (2022) ([PubMed](#)).

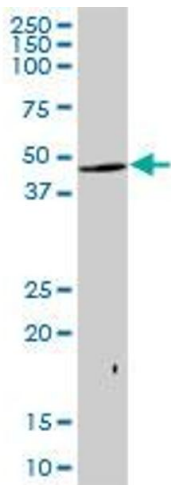


### Western Blotting

**Image 1.** Western Blot analysis of KRT32 expression in transfected 293T cell line by KRT32 MaxPab polyclonal antibody.

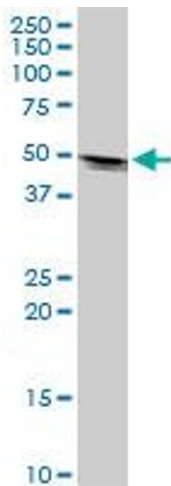
Lane 1: KRTHA2 transfected lysate(49.28 KDa).

Lane 2: Non-transfected lysate.



### Western Blotting

**Image 2.** KRTHA2 MaxPab polyclonal antibody. Western Blot analysis of KRTHA2 expression in human placenta.



### Western Blotting

**Image 3.** KRT32 MaxPab polyclonal antibody. Western Blot analysis of KRT32 expression in HeLa.