

Datasheet for ABIN517411
anti-KRT32 antibody (AA 1-448)



[Go to Product page](#)

1 Image

Overview

Quantity:	100 µg
Target:	KRT32
Binding Specificity:	AA 1-448
Reactivity:	Human
Host:	Rabbit
Clonality:	Polyclonal
Conjugate:	This KRT32 antibody is un-conjugated
Application:	Western Blotting (WB)

Product Details

Purpose:	Rabbit polyclonal antibody raised against a full-length human KRT32 protein.
Immunogen:	KRT32 (AAI48741.1, 1 a.a. ~ 448 a.a) full-length human protein.
Sequence:	<p>MTSSCCVTNN LQASLKSCPR PASVCSSGVN CRPELCLGYV CQPMACLPVS CLPTTFRPAS CLSKTYLSSS CQAASGISGS MGPGSWYSEG AFNGNEKETM QFLNDRLAS YLTRVRQLEQE NAELESRIQE ASHSQVLTMT PDYQSHFRTI EELQQKILCT KAENARMVVN IDNAKLAADD FRAKYEAELA MRQLVEADIN GLRRILDDLT LCKADLEAQV ESLKEELMCL KKNHEEEVGS LRCQLGDRLN IEVDAAPPVD LTRVLEEMRC QYEAMVEANR RDVEEWFNMQ MEELNQQVAT SSEQLQNYQS DIIDLRRTVN TLEIELQAQH SLRDSLENTL TESEARYSSQ LAQMOCMITN VEAQLAEIRA DLERQNQEYQ VLLDVRARLE GEINTYRSLLE ENEDCKLPCN PCSTPSCCTC VPSPCVPRTV CVPRTVGMPC SPCPQGRY</p>
Cross-Reactivity:	Human

Product Details

Characteristics: Antibody reactive against mammalian transfected lysate.

Target Details

Target: KRT32

Alternative Name: KRT32 ([KRT32 Products](#))

Background: Full Gene Name: keratin 32
Synonyms: HA2,HKA2,KRTHA2,hHa2

Gene ID: 3882

Application Details

Application Notes: Optimal working dilution should be determined by the investigator.

Restrictions: For Research Use only

Handling

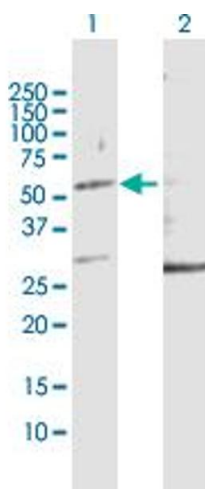
Buffer: In 1x PBS, pH 7.4

Handling Advice: Aliquot to avoid repeated freezing and thawing.

Storage: -20 °C

Storage Comment: Store at -20°C or lower. Aliquot to avoid repeated freezing and thawing.

Images



Western Blotting

Image 1. Western Blot analysis of KRT32 expression in transfected 293T cell line by KRT32 MaxPab polyclonal antibody.

Lane 1: KRT32 transfected lysate(49.28 KDa).

Lane 2: Non-transfected lysate.