

Datasheet for ABIN517465
anti-LDLR antibody (AA 1-860)



[Go to Product page](#)

1 Image

Overview

Quantity:	50 µg
Target:	LDLR
Binding Specificity:	AA 1-860
Reactivity:	Human
Host:	Mouse
Clonality:	Polyclonal
Conjugate:	This LDLR antibody is un-conjugated
Application:	Western Blotting (WB)

Product Details

Purpose:	Mouse polyclonal antibody raised against a full-length human LDLR protein.
Immunogen:	LDLR (AAH14514, 1 a.a. ~ 860 a.a) full-length human protein.
Sequence:	MGPWGWKLRW TVALLAAAG TAVGDRCERN EFQCQDGKCI SYKWVCDGSA ECQDGSDESQ ETCLSVTCKS GDFSCGGRVN RCIPQFWRC DQVDCDNGSD EQGCPPKTCS QDEFRCHDGK CISRQFVCD SDRDCLDGSDE ASCPVLTCGP ASFQCNSSTC IPQLWACDND PDCEDGSDEW PQRCRGLYVF QGDSSPCSAF EFHCLSGECI HSSWRCDGGP DCKDKSDEEN CAVATCRPDE FQCSDGNCIH GSRQCDREYD CKDMSDEVGC VNVTLCEGPN KFKCHSGECI TLDKVCNMAR DCRDWSDEPI KECGTNECLD NNGGC SHVCN DLKIGYECLC PDGFQLVAQR RCEDIDECQD PDTCSQLCVN LEGGYKCQCE EGFQLDPHTK ACKAVGSIAY LFFTNRHEVR KMTLDRSEYT SLIPNLRNVV ALDTEVASNR IYWSDL SQRM ICSTQLDRAH GVSSYDTVIS RDIQAPDGLA VDWIHSNIYW TDSVLGTVSV ADTKGVKRKT LFRENGSKPR AIVVDPVHGF MYWTDWGTPA KIKKGG LNVV DIYSLVTENI QWPNGITL DL LSGRLYWVDS KLHSSSIDV NGGNRK TILE

Product Details

DEKRLAHPFS LAVFEDKVFV TDIINEAIFS ANRLTGSDVN LLAENLLSPE DMVLFHNLQ
PRGVNWCERT TLSNGGCQYL CLPAPQINPH SPKFTCACPD GMLLARDMRS CLTEAEAAVA
TQETSTVRLK VSSTAVRTQH TTTRPVPDTS RLPGATPGLT TVEIVTMSHQ ALGDVAGRGN
EKKPSSVRAL SIVLPIVLLV FLCLGVFLLW KNWRLKNINS INFDPVYQK TTEDEVHICH
NQDGYSYPSR QMVSLEDDVA

Cross-Reactivity:	Human
Characteristics:	Antibody reactive against mammalian transfected lysate.

Target Details

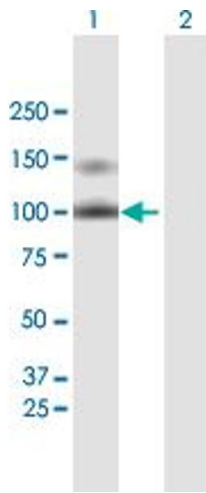
Target:	LDLR
Alternative Name:	LDLR (LDLR Products)
Background:	Full Gene Name: low density lipoprotein receptor Synonyms: FH,FHC
Gene ID:	3949
Pathways:	Hepatitis C , Lipid Metabolism

Application Details

Application Notes:	Optimal working dilution should be determined by the investigator.
Restrictions:	For Research Use only

Handling

Buffer:	In 1x PBS, pH 7.4
Handling Advice:	Aliquot to avoid repeated freezing and thawing.
Storage:	-20 °C
Storage Comment:	Store at -20°C or lower. Aliquot to avoid repeated freezing and thawing.



Western Blotting

Image 1. Western Blot analysis of LDLR expression in transfected 293T cell line by LDLR MaxPab polyclonal antibody.

Lane 1: LDLR transfected lysate(94.6 KDa).

Lane 2: Non-transfected lysate.