



[Go to Product page](#)

Datasheet for ABIN517469

anti-LETM1 antibody (AA 601-708)

1 Image

1 Publication

Overview

Quantity:	50 µL
Target:	LETM1
Binding Specificity:	AA 601-708
Reactivity:	Human
Host:	Mouse
Clonality:	Polyclonal
Conjugate:	This LETM1 antibody is un-conjugated
Application:	Western Blotting (WB), ELISA

Product Details

Purpose:	Mouse polyclonal antibody raised against a partial recombinant LETM1.
Immunogen:	LETM1 (NP_036450, 601 a.a. ~ 708 a.a) partial recombinant protein with GST tag.
Sequence:	ESKASKRLTK RVQQMIGQID GLISQLEMDQ QAGK LAPANG MPTGENVISV AELINAMKQV KHIPESKLTS LAAALDENKD GKVNIDDLK VIELVDKEDV HISTSQVA
Cross-Reactivity:	Human
Characteristics:	Antibody Reactive Against Recombinant Protein.

Target Details

Target:	LETM1
Alternative Name:	LETM1 (LETM1 Products)

Target Details

Background:	Full Gene Name: leucine zipper-EF-hand containing transmembrane protein 1 Synonyms:
Gene ID:	3954
NCBI Accession:	NM_012318

Application Details

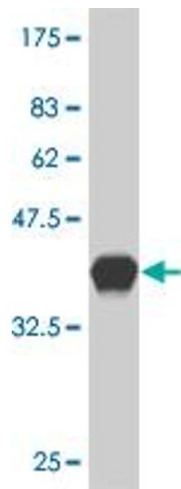
Application Notes:	Optimal working dilution should be determined by the investigator.
Restrictions:	For Research Use only

Handling

Format:	Liquid
Buffer:	50 % glycerol
Handling Advice:	Aliquot to avoid repeated freezing and thawing.
Storage:	-20 °C
Storage Comment:	Store at -20°C or lower. Aliquot to avoid repeated freezing and thawing.

Publications

Product cited in:	Mallilankaraman, Cárdenas, Doonan, Chandramoorthy, Irrinki, Golenár, Csordás, Madireddi, Yang, Müller, Miller, Kolesar, Molgó, Kaufman, Hajnóczky, Foskett, Madesh: "MCUR1 is an essential component of mitochondrial Ca ²⁺ uptake that regulates cellular metabolism." in: Nature cell biology , Vol. 14, Issue 12, pp. 1336-43, (2012) (PubMed).
-------------------	--



Western Blotting

Image 1. Western Blot detection against Immunogen (37.99 kDa) .