



[Go to Product page](#)

Datasheet for ABIN517506
anti-LIF antibody (AA 1-202)

1 Image

Overview

| | |
|----------------------|------------------------------------|
| Quantity: | 50 µg |
| Target: | LIF |
| Binding Specificity: | AA 1-202 |
| Reactivity: | Human |
| Host: | Mouse |
| Clonality: | Polyclonal |
| Conjugate: | This LIF antibody is un-conjugated |
| Application: | Western Blotting (WB) |

Product Details

| | |
|-------------------|-----------------------------------------------------------------------------------------------------------------------------------------------------------------------------------------------------------------------------------------|
| Purpose: | Mouse polyclonal antibody raised against a full-length human LIF protein. |
| Immunogen: | LIF (NP_002300.1, 1 a.a. ~ 202 a.a) full-length human protein. |
| Sequence: | MKVLAAGVVP LLLVLHWKHG AGSPLPITPV NATCAIRHPC HNNLMNQIRS QLAQLNGSAN ALFILYYTAQ GEPFPNNLDK LCGPNVDFP PFHANGTEKA KLVELYRIVV YLGTSLGNIT RDQKILNPSA LSLHSKLNAT ADILRGLLSN VLCRLCSKYH VGHVDVITYGP DTSGKDVFQK KKLGCQLLGK YKQIIAVLAQ AF |
| Cross-Reactivity: | Human |
| Characteristics: | Antibody reactive against mammalian transfected lysate. |

Target Details

| | |
|---------|-----|
| Target: | LIF |
|---------|-----|

Target Details

| | |
|-------------------|--------------------------------------------------------------------------------------------------------------------------------------------------------------------------------------------------------------------------------------------------|
| Alternative Name: | LIF (LIF Products) |
| Background: | Full Gene Name: leukemia inhibitory factor (cholinergic differentiation factor) Synonyms: CDF,DIA,HILDA |
| Gene ID: | 3976 |
| NCBI Accession: | NM_002309 |
| Pathways: | JAK-STAT Signaling , Positive Regulation of Peptide Hormone Secretion , Negative Regulation of Hormone Secretion , Stem Cell Maintenance , Growth Factor Binding |

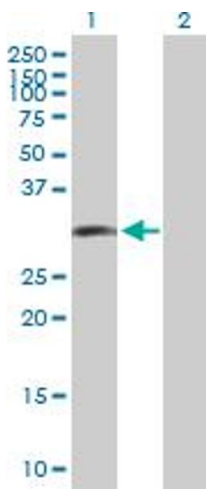
Application Details

| | |
|--------------------|--------------------------------------------------------------------|
| Application Notes: | Optimal working dilution should be determined by the investigator. |
| Restrictions: | For Research Use only |

Handling

| | |
|------------------|--------------------------------------------------------------------------|
| Buffer: | In 1x PBS, pH 7.4 |
| Handling Advice: | Aliquot to avoid repeated freezing and thawing. |
| Storage: | -20 °C |
| Storage Comment: | Store at -20°C or lower. Aliquot to avoid repeated freezing and thawing. |

Images



Western Blotting

Image 1. Western Blot analysis of LIF expression in transfected 293T cell line by LIF MaxPab polyclonal antibody.

Lane 1: LIF transfected lysate(22.22 KDa).

Lane 2: Non-transfected lysate.