



Datasheet for ABIN517533  
**anti-LLGL2 antibody (AA 1-1020)**



[Go to Product page](#)

1 Image

Overview

Quantity:	50 µg
Target:	LLGL2
Binding Specificity:	AA 1-1020
Reactivity:	Human
Host:	Mouse
Clonality:	Polyclonal
Conjugate:	This LLGL2 antibody is un-conjugated
Application:	Western Blotting (WB)

Product Details

Purpose:	Mouse polyclonal antibody raised against a full-length human LLGL2 protein.
Immunogen:	LLGL2 (AAH64994.1, 1 a.a. ~ 1020 a.a) full-length human protein.
Sequence:	MRRFLRPGHD PVRERLKRDL FQFNKTVEHG FPHQPSALGY SPSLRILAIG TRSGAIKLYG APGVVEFMGLH QENNAVTQIH LLPGQCQLVT LLDDNSLHLW SLKVKGGASE LQEDESFTLR GPPGAAPSAT QITVVLPHSS CELLYLGTES GNVFVQLPA FRALEDRTIS SDAVLQRLPE EARHRRVFEM VEALQEHPRD PNQILIGYSR GLVVIWDLQG SRVLYHFLSS QQLENIWWQR DGRLLVSCHS DGSYCQWPVS SEAQQPEPLR SLVPYGPFPK KAITRILWLT TRQGLPFTIF QGGMPRASYG DRHCISVIHD GQQTAFDFTS RVIGFTVLTE ADPAATFDDP YALVVLAEEE LVVIDLQTAG WPPVQLPYLA SLHCSAITCS HHVSNIPKLL WERIIAAGSR QNAHFSTMEW PIDGGTSLTP APPQRDLLLL GHEDGTVRFW DASGVCLRLL YKLSTVRVFL TDTDPNENLS AQGEDEWPPL RKVGSFDPYS DDPRLGIQKI FLCKYSGYLA VAGTAGQVLV LELNDEAAEQ AVEQVEADLL QDQEGYRWKG HERLAARSGP VRFEPGFQPF VLVQCQPPAV VTSALHSEW

## Product Details

---

RLVAFGTSHG FGLFDHQRR QVFKCTLHP SDQLALEGPL SRVKSLKKSL RQSFRRMRRS  
RVSSRKRHPA GPPGEAQEGS AKAERPGLQN MELAPVQRKI EARSAEDSFT GFVRTLYFAD  
TYLKDSSRHC PSLWAGTNGG TIYAFSLRVP PAERRMDESV RAEQAKEIQL MHRAPVVGIL  
VLDGHSVPLP EPLEVAHDLS KSPDMQGS HQ LLVSEEQFK VFTLPKVS AK LKLKLTALEG  
SRVRRVSAH FGSRR AEDYG EHHLAVLTNL GDIQV VSLPL LKPQVRYSCI RREDVSGIAS  
CVFTKYGGF YLISPSEFER FSLSTKWLVE PRCLVDSAET KNHRPGNGAG PKKAPSRARN  
SGTQSDGEEK QPGLVMERAL LSDERVLKEI QSTLEGDRGS GNWRSHRAAV GCSLSNGGAE

Cross-Reactivity: Human

Characteristics: Antibody reactive against mammalian transfected lysate.

## Target Details

---

Target: LLGL2

Alternative Name: LLGL2 ([LLGL2 Products](#))

Background: Full Gene Name: lethal giant larvae homolog 2 (Drosophila)  
Synonyms: HGL,LGL2

Gene ID: 3993

Pathways: [WNT Signaling](#)

## Application Details

---

Application Notes: Optimal working dilution should be determined by the investigator.

Restrictions: For Research Use only

## Handling

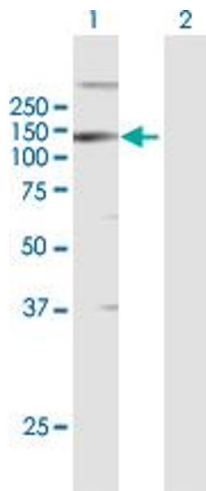
---

Buffer: In 1x PBS, pH 7.4

Handling Advice: Aliquot to avoid repeated freezing and thawing.

Storage: -20 °C

Storage Comment: Store at -20°C or lower. Aliquot to avoid repeated freezing and thawing.



### Western Blotting

**Image 1.** Western Blot analysis of LLGL2 expression in transfected 293T cell line by LLGL2 MaxPab polyclonal antibody.

Lane 1: LLGL2 transfected lysate(112.2 KDa).

Lane 2: Non-transfected lysate.