



Datasheet for ABIN517557  
**anti-VWA5A antibody (AA 1-786)**



[Go to Product page](#)

3 Images

Overview

Quantity:	50 µg
Target:	VWA5A
Binding Specificity:	AA 1-786
Reactivity:	Human
Host:	Mouse
Clonality:	Polyclonal
Conjugate:	This VWA5A antibody is un-conjugated
Application:	Western Blotting (WB)

Product Details

Purpose:	Mouse polyclonal antibody raised against a full-length human LOH11CR2A protein.
Immunogen:	LOH11CR2A (NP_055437.2, 1 a.a. ~ 786 a.a) full-length human protein.
Sequence:	MVHFCGLLTL HREPVLKSI SVSVNIYEFV AGVSATLNYE NEEKVPLEAF VFVPMDEDSA VYSFEALVDG KKIVAELQDK MKARTNYEKA ISQGHQAFLL EGDSSSRDVF SCNVGNLQPG SKAAVTLKYV QELPLEADGA LRFVLPVAVLN PRYQFSGSSK DSCLNVKTPI VPVEDLPYTL SMVATIDSQH GIEKVQSNCP LSPTEYLGED KTSAQVSLAA GHKFDRDVEL LIYNEVHTP SVVLEMGM PN MKPGHLMGDP SAMVSFYFNI PEDQPSNTCG EFIFLMDRSG SMQSPMSSQD TSQLRIQAAK ETLILLKSL PIGCYFNIYG FGSSYEACFP ESVKYTQTM EEALGRVKLM QADLGGTEIL APLQNIYRGP SIPGHPLQLF VFTDGEVTD T FSVIKEVRIN RQKHRCSFG IGEGTSTSLI KGIARASGGT SEFITGKDRM QSKALRTLKR SLQPVEDVS LSWHLPPGLS AKMLSPEQTV IFRGQRLISY AQLTGRMPAA ETTGEVCLKY TLQGKTFEDK VTFPLQPKPD VNLTIHRLAA KSL LQTKDMG LRETPASDKK DALNLSLESG VISSFTAFIA INKELNKPVQ

## Product Details

---

GPLAHRDVPR PILLGASAPL KIKCQSGFRK ALHSDRPPSA SQPRGELMCY KAKTFQMDDY  
SLCGLISHKD QHSPGFGENH LVQLIYHQNA NGSWDLNEDL AKILGMSLEE IMAAQPAELV  
DSSGWATILA VIWLHSNGKD LKCEWELLER KAVAWMRAHA GSTMPSVKA AITFLKSSVD  
PAIFAF

Cross-Reactivity: Human

Characteristics: Antibody reactive against mammalian transfected lysate.

## Target Details

---

Target: VWA5A

Alternative Name: VWA5A ([VWA5A Products](#))

Background: Full Gene Name: von Willebrand factor A domain containing 5A  
Synonyms: BCSC-1,BCSC1,LOH11CR2A

Gene ID: 4013

NCBI Accession: [NM\\_014622](#)

## Application Details

---

Application Notes: Optimal working dilution should be determined by the investigator.

Restrictions: For Research Use only

## Handling

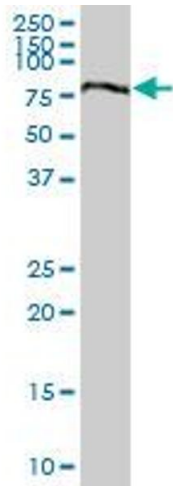
---

Buffer: In 1x PBS, pH 7.4

Handling Advice: Aliquot to avoid repeated freezing and thawing.

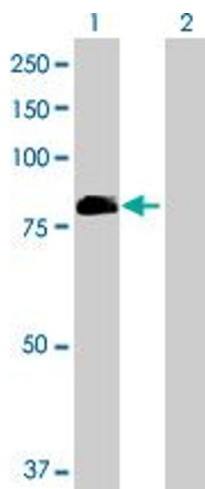
Storage: -20 °C

Storage Comment: Store at -20°C or lower. Aliquot to avoid repeated freezing and thawing.



#### Western Blotting

**Image 1.** LOH11CR2A MaxPab polyclonal antibody. Western Blot analysis of LOH11CR2A expression in human stomach.

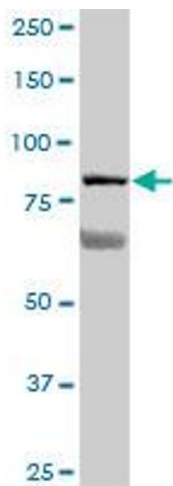


#### Western Blotting

**Image 2.** Western Blot analysis of VWA5A expression in transfected 293T cell line by VWA5A MaxPab polyclonal antibody.

Lane 1: LOH11CR2A transfected lysate(86.46 KDa).

Lane 2: Non-transfected lysate.



#### Western Blotting

**Image 3.** LOH11CR2A MaxPab polyclonal antibody. Western Blot analysis of LOH11CR2A expression in human liver.