



[Go to Product page](#)

Datasheet for ABIN517563

anti-Lipoprotein Lipase antibody (AA 1-475)

1 Image

Overview

Quantity:	50 µg
Target:	Lipoprotein Lipase (LPL)
Binding Specificity:	AA 1-475
Reactivity:	Human
Host:	Mouse
Clonality:	Polyclonal
Conjugate:	This Lipoprotein Lipase antibody is un-conjugated
Application:	Western Blotting (WB)

Product Details

Purpose:	Mouse polyclonal antibody raised against a full-length human LPL protein.
Immunogen:	LPL (NP_000228.1, 1 a.a. ~ 475 a.a) full-length human protein.
Sequence:	MESKALLVLT LAVWLQSLTA SRGGVAAADQ RRDFIDIESK FALRTPEDTA EDTCHLIPGV AESVATCHFN HSKTFMVIH GWTVTGMYES WVPKLVAALY KREPDSNVIV VDWLSRAQEH YPVSAGYTKL VGQDVARFIN WMEEEFNYPL DNVHLLGYSL GAHAAGIAGS LTNKKVNRIT GLDPAGPNFE YAEAPSRLSP DDADFVDVLH TFTRGSPGRS IGIQKPVGHV DIYPNGGTFQ PGCNIGEAIR VIAERGLGDV DQLVKCSHER SIHLFIDSLL NEENPSKAYR CSSKEAFEKG LCLSCRKNRC NNNGYEINKV RAKRSSKMYL KTRSQMPYKV FHYQVKIHFS GTESEHTNQ AFEISLYGTV AESENIPFTL PEVSTNKTYS FLIYTEVDIG ELLMLKWKW SDSYFSWSDW WSSPGFAIQK IRVKAGETQK KVIFCSREKV SHLQKGKAPA VFKCHDKSL NKKSG
Cross-Reactivity:	Human

Product Details

Characteristics: Antibody reactive against mammalian transfected lysate.

Target Details

Target: Lipoprotein Lipase (LPL)

Alternative Name: LPL ([LPL Products](#))

Background: Full Gene Name: lipoprotein lipase
Synonyms: HDLCQ11,LIPD

Gene ID: 4023

NCBI Accession: [NM_000237](#)

Pathways: [Lipid Metabolism](#)

Application Details

Application Notes: Optimal working dilution should be determined by the investigator.

Restrictions: For Research Use only

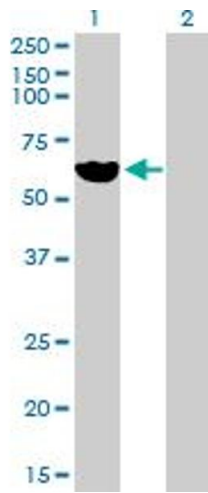
Handling

Buffer: In 1x PBS, pH 7.4

Handling Advice: Aliquot to avoid repeated freezing and thawing.

Storage: -20 °C

Storage Comment: Store at -20°C or lower. Aliquot to avoid repeated freezing and thawing.



Western Blotting

Image 1. Western Blot analysis of LPL expression in transfected 293T cell line by LPL MaxPab polyclonal antibody.

Lane 1: LPL transfected lysate(52.25 KDa).

Lane 2: Non-transfected lysate.