



[Go to Product page](#)

Datasheet for ABIN517565
anti-LRP1 antibody (AA 1-292)

3 Images

Overview

Quantity:	50 µg
Target:	LRP1
Binding Specificity:	AA 1-292
Reactivity:	Human
Host:	Mouse
Clonality:	Polyclonal
Conjugate:	This LRP1 antibody is un-conjugated
Application:	Western Blotting (WB), Immunofluorescence (IF), Immunohistochemistry (Paraffin-embedded Sections) (IHC (p))

Product Details

Purpose:	Mouse polyclonal antibody raised against a full-length human LRP1 protein.
Immunogen:	LRP1 (AAH45107.1, 1 a.a. ~ 292 a.a) full-length human protein.
Sequence:	MLTPPLLLLL PLLSALVAAA IDAPKTCSPK QFACRDQITC ISKGWRCDGE RDCPDGSDEA PEICPQSKAQ RCQPNEHNCL GTELCVPMSR LCNGVQDCMD GSDEGPHCRE LQGNC SRLGC QHHCVPTLDG PTCYCNS SFQ LQADGKTCKD FDECSVYGTC SQLCTNTDGS FIGGCVEGYL LQPDNRSCKA KNEPVDRPPV LLIANSQNIL ATYLSGAQVS TITPTSTRQT TAMDFSYANE TVCWVHVGDS AAQTQLKCAR MPGLKGFVDE HTINISLSLH LCVFSKSQQE MG
Cross-Reactivity:	Human
Characteristics:	Antibody reactive against mammalian transfected lysate.

Target Details

Target:	LRP1
Alternative Name:	LRP1 (LRP1 Products)
Background:	Full Gene Name: low density lipoprotein-related protein 1 (alpha-2-macroglobulin receptor) Synonyms: A2MR,APOER,APR,CD91,FLJ16451,IGFBP3R,LRP,MGC88725,TGFBR5
Gene ID:	4035
Pathways:	Smooth Muscle Cell Migration , Platelet-derived growth Factor Receptor Signaling

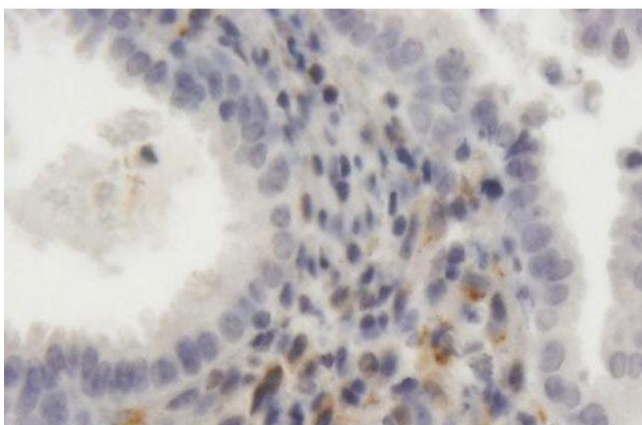
Application Details

Application Notes:	Optimal working dilution should be determined by the investigator.
Restrictions:	For Research Use only

Handling

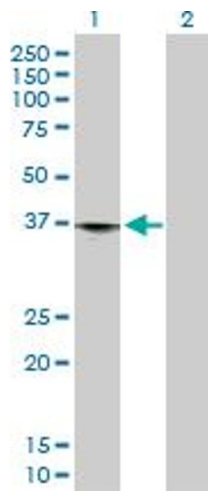
Buffer:	In 1x PBS, pH 7.4
Handling Advice:	Aliquot to avoid repeated freezing and thawing.
Storage:	-20 °C
Storage Comment:	Store at -20°C or lower. Aliquot to avoid repeated freezing and thawing.

Images



Immunostaining

Image 1. Immunoperoxidase of purified MaxPab antibody to LRP1 on formalin-fixed paraffin-embedded human endometrium. [antibody concentration 3 ug/ml]

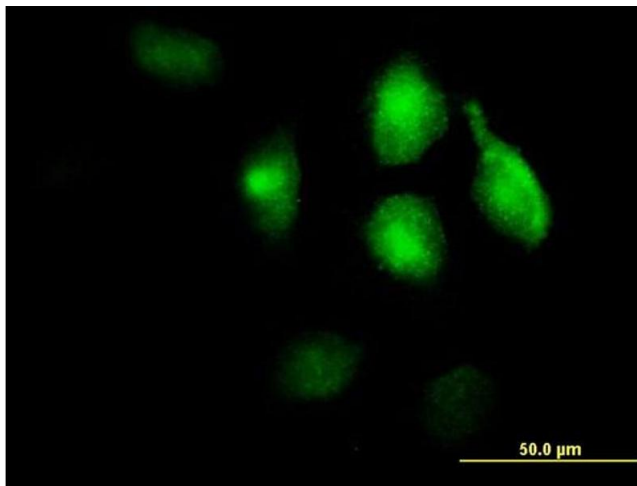


Western Blotting

Image 2. Western Blot analysis of LRP1 expression in transfected 293T cell line by LRP1 MaxPab polyclonal antibody.

Lane 1: LRP1 transfected lysate(32.12 KDa).

Lane 2: Non-transfected lysate.



Immunofluorescence

Image 3. Immunofluorescence of purified MaxPab antibody to LRP1 on HeLa cell. [antibody concentration 10 ug/ml]