



[Go to Product page](#)

Datasheet for ABIN517569

## anti-LSAMP antibody (AA 29-338)

### 1 Image

#### Overview

Quantity:	50 µg
Target:	LSAMP
Binding Specificity:	AA 29-338
Reactivity:	Human
Host:	Mouse
Clonality:	Polyclonal
Conjugate:	This LSAMP antibody is un-conjugated
Application:	Western Blotting (WB)

#### Product Details

Purpose:	Mouse polyclonal antibody raised against a full-length human LSAMP protein.
Immunogen:	LSAMP (AAH33803, 29 a.a. ~ 338 a.a) full-length human protein.
Sequence:	VRSVDFNRGT DNITVRQGDT AILRCVVEDK NSKVAWLNRS GIIFAGHDKW SLDPRVELEK RHSLEYSRLRI QKVDVYDEGS YTCSVQTQHE PKTSQVYLIV QVPPKISNIS SDVTVNEGSN VTLVCMANGR PEPVITWRHL TPTGREFEGE EEYLEILGIT REQSGKYECK AANEVSSADV KQVKVTVNYP PTITESKSNE ATTGRQASLK CEASAVPAPD FEWYRDDTRI NSANGLEIKS TEGQSSLTVT NVTEEHYGNV TCVAANKLGV TNASLVLFRRP GSVRGINGSI SLAVPLWLLA ASLLCLLSKC
Cross-Reactivity:	Human
Characteristics:	Antibody reactive against mammalian transfected lysate.

## Target Details

Target:	LSAMP
Alternative Name:	LSAMP ( <a href="#">LSAMP Products</a> )
Background:	Full Gene Name: limbic system-associated membrane protein Synonyms: IGLON3,LAMP
Gene ID:	4045

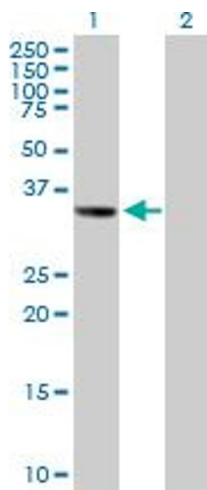
## Application Details

Application Notes:	Optimal working dilution should be determined by the investigator.
Restrictions:	For Research Use only

## Handling

Buffer:	In 1x PBS, pH 7.4
Handling Advice:	Aliquot to avoid repeated freezing and thawing.
Storage:	-20 °C
Storage Comment:	Store at -20°C or lower. Aliquot to avoid repeated freezing and thawing.

## Images



### Western Blotting

**Image 1.** Western Blot analysis of LSAMP expression in transfected 293T cell line by LSAMP MaxPab polyclonal antibody.

Lane 1: LSAMP transfected lysate(37.29 kDa).

Lane 2: Non-transfected lysate.