



[Go to Product page](#)

Datasheet for ABIN517577
anti-LTBR antibody (AA 1-435)

1 Image

Overview

Quantity:	50 µL
Target:	LTBR
Binding Specificity:	AA 1-435
Reactivity:	Human
Host:	Mouse
Clonality:	Polyclonal
Conjugate:	This LTBR antibody is un-conjugated
Application:	Western Blotting (WB)

Product Details

Purpose:	Mouse polyclonal antibody raised against a full-length human LTBR protein.
Immunogen:	LTBR (NP_002333.1, 1 a.a. ~ 435 a.a) full-length human protein.
Sequence:	MLLPWATSAP GLAWGPLVLG LFGLLAASQP QAVPPYASEN QTCRDQEKEY YEPQHRICCS RCPPGTYVSA KCSRIRDVTC ATCAENSYNE HWNYLTICQL CRPCDPMVGL EEIAPCTSKR KTQCRCQPGM FCAAWALECT HCELLSDCPP GTEAEKDEV GKGNNHCVPC KAGHFQNTSS PSARCQPHTR CENQGLVEAA PGTAQSDTTC KNPLELPPE MSGTMLMLAV LLPLAFFLLL ATVFSCIWKS HPSLCRKLGS LLKRRPQEGEG PNPVAGSWEP PKAHPYFPDL VQPLLPISGD VSPVSTGLPA APVLEAGVPQ QQSPLDLTRE PQLEPGEQSQ VAHGTNGIHV TGGSMITIGN IYIYNGPVLG GPPGPGDLPA TPEPPYPIPE EGDPGPPGLS TPHQEDGKAW HLAETEHCGA TPSNRGPRNQ FITHD
Cross-Reactivity:	Human

Product Details

Characteristics: Antibody reactive against mammalian transfected lysate.

Target Details

Target: LTBR

Alternative Name: LTBR ([LTBR Products](#))

Background: Full Gene Name: lymphotoxin beta receptor (TNFR superfamily, member 3)
Synonyms: D12S370,LT-BETA-R,TNF-R-III,TNFCR,TNFR-RP,TNFR2-RP,TNFRSF3

Gene ID: 4055

NCBI Accession: [NM_002342](#)

Pathways: [NF-kappaB Signaling](#)

Application Details

Application Notes: Optimal working dilution should be determined by the investigator.

Restrictions: For Research Use only

Handling

Format: Liquid

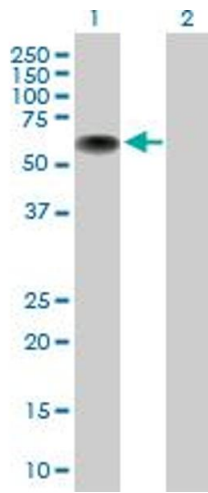
Buffer: No additive

Preservative: Without preservative

Handling Advice: Aliquot to avoid repeated freezing and thawing.

Storage: -20 °C

Storage Comment: Store at -20°C or lower. Aliquot to avoid repeated freezing and thawing.



Western Blotting

Image 1. Western Blot analysis of LTBR expression in transfected 293T cell line by LTBR MaxPab polyclonal antibody.

Lane 1: LTBR transfected lysate(46.70 KDa).

Lane 2: Non-transfected lysate.