

Datasheet for ABIN517581  
**anti-LY6E antibody (AA 1-131)**



[Go to Product page](#)

1 Image

1 Publication

## Overview

Quantity:	100 µg
Target:	LY6E
Binding Specificity:	AA 1-131
Reactivity:	Human
Host:	Rabbit
Clonality:	Polyclonal
Conjugate:	This LY6E antibody is un-conjugated
Application:	Western Blotting (WB)

## Product Details

Purpose:	Rabbit polyclonal antibody raised against a full-length human LY6E protein.
Immunogen:	LY6E (NP_002337.1, 1 a.a. ~ 131 a.a) full-length human protein.
Sequence:	MKIFLPVLLA ALLGVERASS LMCFSCLNQK SNLYCLKPTI CSDQDNYCVT VSASAGIGNL VTFGHLSLTK CSPACPIPEG VNVGVASMG I SCCQSFLCNF SAADGGLRAS VTLLGAGLLL SLLPALLRFG P
Cross-Reactivity:	Human
Characteristics:	Antibody reactive against mammalian transfected lysate.

## Target Details

Target:	LY6E
---------	------

## Target Details

---

Alternative Name:	LY6E ( <a href="#">LY6E Products</a> )
Background:	Full Gene Name: lymphocyte antigen 6 complex, locus E Synonyms: RIG-E,RIGE,SCA-2,SCA2,TSA-1
Gene ID:	4061
NCBI Accession:	<a href="#">NM_002346</a>
Pathways:	<a href="#">Hormone Transport</a>

## Application Details

---

Application Notes:	Optimal working dilution should be determined by the investigator.
Restrictions:	For Research Use only

## Handling

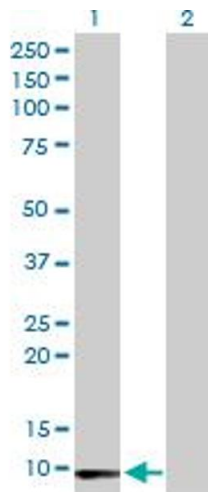
---

Buffer:	In 1x PBS, pH 7.4
Handling Advice:	Aliquot to avoid repeated freezing and thawing.
Storage:	-20 °C
Storage Comment:	Store at -20°C or lower. Aliquot to avoid repeated freezing and thawing.

## Publications

---

Product cited in:	Kim, Hong, Roh, Kim, Kim, Oh, Ahn, Kang, Baek, Jeong: "High expression of LY6E is an independent prognostic factor of colorectal cancer patients." in: <b>Oncology reports</b> , Vol. 49, Issue 4, (2023) ( <a href="#">PubMed</a> ).
-------------------	---



### Western Blotting

**Image 1.** Western Blot analysis of LY6E expression in transfected 293T cell line by LY6E MaxPab polyclonal antibody.

Lane 1: LY6E transfected lysate(13.50 KDa).

Lane 2: Non-transfected lysate.