



[Go to Product page](#)

Datasheet for ABIN517582
anti-LY6H antibody (AA 26-140)

1 Image

Overview

Quantity:	100 µg
Target:	LY6H
Binding Specificity:	AA 26-140
Reactivity:	Human
Host:	Mouse
Clonality:	Monoclonal
Conjugate:	This LY6H antibody is un-conjugated
Application:	ELISA, Western Blotting (WB)

Product Details

Purpose:	Mouse monoclonal antibody raised against a full-length recombinant LY6H.
Immunogen:	LY6H (AAH28894, 26 a.a. ~ 140 a.a) full-length recombinant protein with GST tag. MW of the GST tag alone is 26 KDa.
Sequence:	LWCQDCTLTT NSSHCTPKQC QPSDTV CASV RITDPSSSRK DHSVNKMCAS SCDFVKRHFF SDYLMGFINS GILKVDVDC EKDLCNGAAG AGHSPWALAG GLLLSLGPAL LWAGP
Clone:	1D1
Isotype:	IgG2b
Cross-Reactivity:	Human
Characteristics:	Antibody Reactive Against Recombinant Protein.

Target Details

Target:	LY6H
Alternative Name:	LY6H (LY6H Products)
Background:	Full Gene Name: lymphocyte antigen 6 complex, locus H Synonyms: NMLY6
Gene ID:	4062

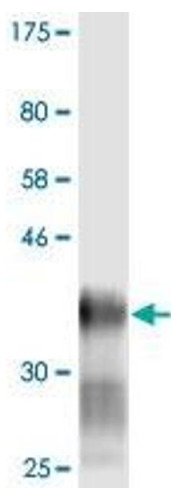
Application Details

Application Notes:	Optimal working dilution should be determined by the investigator.
Restrictions:	For Research Use only

Handling

Buffer:	In 1x PBS, pH 7.4
Handling Advice:	Aliquot to avoid repeated freezing and thawing.
Storage:	-20 °C
Storage Comment:	Store at -20°C or lower. Aliquot to avoid repeated freezing and thawing.

Images



Western Blotting

Image 1. Western Blot detection against Immunogen (38.39 kDa).