



[Go to Product page](#)

Datasheet for ABIN517590
anti-SH2D1A antibody (AA 1-128)

1 Image

Overview

| | |
|----------------------|---------------------------------------|
| Quantity: | 50 µg |
| Target: | SH2D1A |
| Binding Specificity: | AA 1-128 |
| Reactivity: | Human |
| Host: | Mouse |
| Clonality: | Polyclonal |
| Conjugate: | This SH2D1A antibody is un-conjugated |
| Application: | Western Blotting (WB) |

Product Details

| | |
|-------------------|--|
| Purpose: | Mouse polyclonal antibody raised against a full-length human SH2D1A protein. |
| Immunogen: | SH2D1A (NP_002342.1, 1 a.a. ~ 128 a.a) full-length human protein. |
| Sequence: | MDAVAVYHGK ISRETGEKLL LATGLDGSYL LRDSSEVPGV YCLCVLYHGY IYTYRVSQTE TGSWSAETAP GVHKRYFRKI KNLISAFQKP DQGIVIPLQY PVEKKSSARS TQGTTGIRED PDVCLKAP |
| Cross-Reactivity: | Human |
| Characteristics: | Antibody reactive against mammalian transfected lysate. |

Target Details

| | |
|---------|--------|
| Target: | SH2D1A |
|---------|--------|

Target Details

| | |
|-------------------|--|
| Alternative Name: | SH2D1A (SH2D1A Products) |
| Background: | Full Gene Name: SH2 domain protein 1A Synonyms: DSHP,EBVS,FLJ18687,FLJ92177,IMD5,LYP,MTCP1,SAP,XLP,XLPD |
| Gene ID: | 4068 |
| NCBI Accession: | NM_002351 |
| Pathways: | Regulation of Leukocyte Mediated Immunity , Positive Regulation of Immune Effector Process |

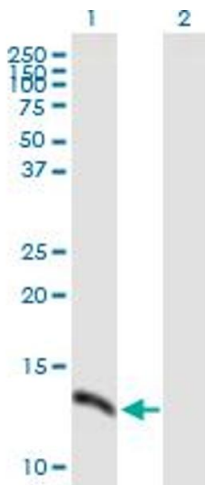
Application Details

| | |
|--------------------|--|
| Application Notes: | Optimal working dilution should be determined by the investigator. |
| Restrictions: | For Research Use only |

Handling

| | |
|------------------|--|
| Buffer: | In 1x PBS, pH 7.4 |
| Handling Advice: | Aliquot to avoid repeated freezing and thawing. |
| Storage: | -20 °C |
| Storage Comment: | Store at -20°C or lower. Aliquot to avoid repeated freezing and thawing. |

Images



Western Blotting

Image 1. Western Blot analysis of SH2D1A expression in transfected 293T cell line by SH2D1A MaxPab polyclonal antibody.

Lane 1: SH2D1A transfected lysate(14.08 KDa).

Lane 2: Non-transfected lysate.