



[Go to Product page](#)

Datasheet for ABIN517598
anti-NBR1 antibody (AA 2-96)

1 Image

2 Publications

Overview

Quantity:	50 µL
Target:	NBR1
Binding Specificity:	AA 2-96
Reactivity:	Human
Host:	Mouse
Clonality:	Polyclonal
Conjugate:	This NBR1 antibody is un-conjugated
Application:	Western Blotting (WB), ELISA

Product Details

Purpose:	Mouse polyclonal antibody raised against a partial recombinant NBR1.
Immunogen:	NBR1 (NP_005890, 2 a.a. ~ 96 a.a) partial recombinant protein with GST tag.
Sequence:	EPQVTLNVTF KNEIQSFLVS DPENTTWADI EAMVKVSFDL NTIQIKYLDE ENEEVSINSQ GEYEEALKMA VKQGNQLQMQ VHEGHHVDE APPPV
Cross-Reactivity:	Human
Characteristics:	Antibody Reactive Against Recombinant Protein.

Target Details

Target:	NBR1
Alternative Name:	NBR1 (NBR1 Products)

Target Details

Background: Full Gene Name: neighbor of BRCA1 gene 1
Synonyms: 1A1-3B,KIAA0049,M17S2,MIG19

Gene ID: 4077

NCBI Accession: [NM_005899](#)

Pathways: [Autophagy](#)

Application Details

Application Notes: Optimal working dilution should be determined by the investigator.

Restrictions: For Research Use only

Handling

Format: Liquid

Buffer: 50 % glycerol

Handling Advice: Aliquot to avoid repeated freezing and thawing.

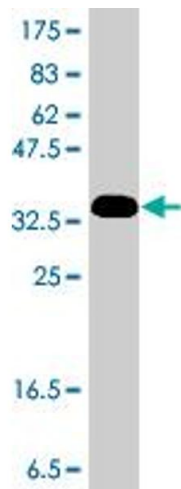
Storage: -20 °C

Storage Comment: Store at -20°C or lower. Aliquot to avoid repeated freezing and thawing.

Publications

Product cited in: Kenific, Stehbens, Goldsmith, Leidal, Faure, Ye, Wittmann, Debnath: "NBR1 enables autophagy-dependent focal adhesion turnover." in: **The Journal of cell biology**, Vol. 212, Issue 5, pp. 577-90, (2016) ([PubMed](#)).

Mostowy, Sancho-Shimizu, Hamon, Simeone, Brosch, Johansen, Cossart: "p62 and NDP52 proteins target intracytosolic Shigella and Listeria to different autophagy pathways." in: **The Journal of biological chemistry**, Vol. 286, Issue 30, pp. 26987-95, (2011) ([PubMed](#)).



Western Blotting

Image 1. Western Blot detection against Immunogen (36.56 KDa) .