



Datasheet for ABIN517611  
**anti-SMAD1 antibody (AA 1-465)**



[Go to Product page](#)

7 Images

Overview

Quantity:	100 µg
Target:	SMAD1
Binding Specificity:	AA 1-465
Reactivity:	Human
Host:	Mouse
Clonality:	Monoclonal
Conjugate:	This SMAD1 antibody is un-conjugated
Application:	Western Blotting (WB), ELISA, Immunofluorescence (IF), Immunohistochemistry (Paraffin-embedded Sections) (IHC (p))

Product Details

Purpose:	Mouse monoclonal antibody raised against a full length recombinant SMAD1.
Immunogen:	SMAD1 (AAH01878.1, 1 a.a. ~ 465 a.a) full-length recombinant protein with GST tag. MW of the GST tag alone is 26 KDa.
Sequence:	MNVTSLFSFT SPAVKRLLGW KQGDEEEKWA EKAVDALVKK LKKKKGAMEE LEKALSCPGQ PSNCVTIPRS LDGRLQVSHR KGLPHVIYCR VWRWPDQLQSH HELKPLECCE FPFGSKQKEV CINPYHYKRV ESPVLPPVLV PRHSEYNPQH SLLAQFRNLG QNEPHMPLNA TFPDSFQQPN SHPFPHPNS SYPNSPGSSS STYPHSPTSS DPGSPFQMPA DTPPPAYLPP EDPMTQDGSQ PMDTNMMAPP LPSEINRGDV QAVAYEEPKH WCSIVYYELN NRVGEAFHAS STSVLVDGFT DPSNKNRFC LGLLSNVNRN STIENTRRHI GKGVHLYYVG GEVYAECLSD SSIFVQSRNC NYHHGFHPTT VCKIPSGCSL KIFNNQEFAQ LLAQSVNHGF ETVYELTKMC TIRMSFVKGW GAEYHRQDVT STPCWIEIHL HGPLQWLDKV LTQMGSPHNP ISSVS

## Product Details

---

Clone:	2A1
Isotype:	IgG2b
Cross-Reactivity:	Human, Mouse, Rat
Characteristics:	Antibody Reactive Against Recombinant Protein.

## Target Details

---

Target:	SMAD1
Alternative Name:	SMAD1 ( <a href="#">SMAD1 Products</a> )
Background:	Full Gene Name: SMAD family member 1 Synonyms: BSP1,JV4-1,JV41,MADH1,MADR1
Gene ID:	4086
Pathways:	<a href="#">Stem Cell Maintenance</a> , <a href="#">Regulation of Muscle Cell Differentiation</a> , <a href="#">Skeletal Muscle Fiber Development</a>

## Application Details

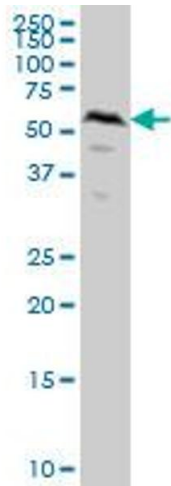
---

Application Notes:	Optimal working dilution should be determined by the investigator.
Restrictions:	For Research Use only

## Handling

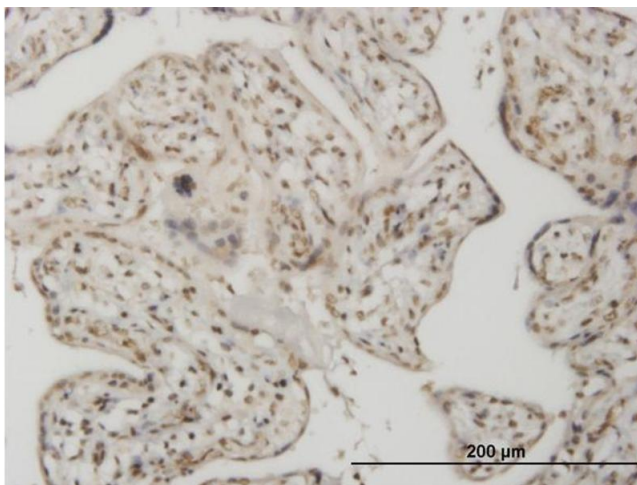
---

Buffer:	In 1x PBS, pH 7.4
Handling Advice:	Aliquot to avoid repeated freezing and thawing.
Storage:	-20 °C
Storage Comment:	Store at -20°C or lower. Aliquot to avoid repeated freezing and thawing.



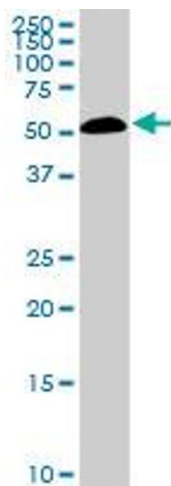
### Western Blotting

**Image 1.** SMAD1 monoclonal antibody (M04), clone 2A1  
Western Blot analysis of SMAD1 expression in HeLa .



### Immunostaining

**Image 2.** Immunoperoxidase of monoclonal antibody to SMAD1 on formalin-fixed paraffin-embedded human placenta. [antibody concentration 1.5 ug/ml]



### Western Blotting

**Image 3.** SMAD1 monoclonal antibody (M04), clone 2A1.  
Western Blot analysis of SMAD1 expression in NIH/3T3 .

Please check the [product details page](#) for more images. Overall 7 images are available for ABIN517611.