

Datasheet for ABIN517621
anti-SMAD2 antibody (AA 181-280)[Go to Product page](#)

4 Images

Overview

Quantity:	100 µg
Target:	SMAD2
Binding Specificity:	AA 181-280
Reactivity:	Human
Host:	Mouse
Clonality:	Monoclonal
Conjugate:	This SMAD2 antibody is un-conjugated
Application:	Western Blotting (WB), ELISA, Proximity Ligation Assay (PLA)

Product Details

Purpose:	Mouse monoclonal antibody raised against a partial recombinant SMAD2.
Immunogen:	SMAD2 (AAH25699, 181 a.a. ~ 280 a.a) partial recombinant protein with GST tag. MW of the GST tag alone is 26 KDa.
Sequence:	PRHTEILTEL PPLDDYTHSI PENTNFPAGI EPQSNYIPET PPPGYISEDG ETSDQQLNQS MDTGSPAELS PTTLSPVNHS LDLQPVTYSE PAFWCISIYY
Clone:	2D7
Isotype:	IgG2a
Cross-Reactivity:	Human
Characteristics:	Antibody Reactive Against Recombinant Protein.

Target Details

Target:	SMAD2
Alternative Name:	SMAD2 (SMAD2 Products)
Background:	Full Gene Name: SMAD family member 2 Synonyms: JV18,JV18-1,MADH2,MADR2,MGC22139,MGC34440,hMAD-2,hSMAD2
Gene ID:	4087
Pathways:	Cell Division Cycle , Hormone Transport , Chromatin Binding , Protein targeting to Nucleus

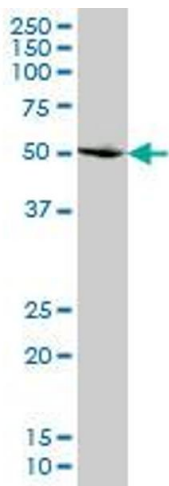
Application Details

Application Notes:	Optimal working dilution should be determined by the investigator.
Restrictions:	For Research Use only

Handling

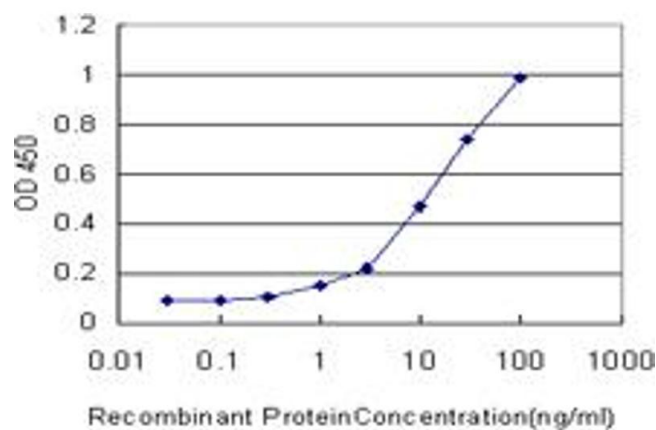
Buffer:	In 1x PBS, pH 7.4
Handling Advice:	Aliquot to avoid repeated freezing and thawing.
Storage:	-20 °C
Storage Comment:	Store at -20°C or lower. Aliquot to avoid repeated freezing and thawing.

Images



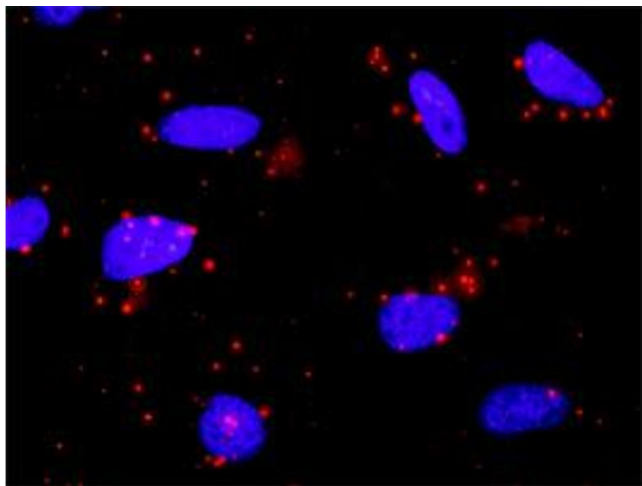
Western Blotting

Image 1. SMAD2 monoclonal antibody (M07), clone 2D7
Western Blot analysis of SMAD2 expression in HeLa .



ELISA

Image 2. Detection limit for recombinant GST tagged SMAD2 is approximately 0.3ng/ml as a capture antibody.



Proximity Ligation Assay

Image 3. Proximity Ligation Analysis of protein-protein interactions between CAMK2A and SMAD2. HeLa cells were stained with anti-CAMK2A rabbit purified polyclonal 1:1200 and anti-SMAD2 mouse monoclonal antibody 1:50. Each red dot represents the detection of protein-protein interaction complex, and nuclei were counterstained with DAPI (blue).

Please check the [product details page](#) for more images. Overall 4 images are available for ABIN517621.