

Datasheet for ABIN517627
anti-SMAD3 antibody (AA 147-270)



[Go to Product page](#)

4 Images

Overview

Quantity:	100 µg
Target:	SMAD3
Binding Specificity:	AA 147-270
Reactivity:	Human
Host:	Mouse
Clonality:	Monoclonal
Conjugate:	This SMAD3 antibody is un-conjugated
Application:	Western Blotting (WB), ELISA, Immunofluorescence (IF)

Product Details

Purpose:	Mouse monoclonal antibody raised against a full length recombinant SMAD3.
Immunogen:	SMAD3 (NP_005893, 147 a.a. ~ 270 a.a) full-length recombinant protein with GST tag. MW of the GST tag alone is 26 KDa.
Sequence:	PAEFPLDDY SHSIPENTNF PAGIEPQSN I PETPPPGYLS EDGETSDHQM NHSMDAGSPN LSPNPMSPA H NNLDLQPVTY CEPAFWCSIS YYELNQRVGE TFHASQPSMT VDGFTDPSNS ERFC
Clone:	4F9
Isotype:	IgG2b
Cross-Reactivity:	Human
Characteristics:	Antibody Reactive Against Recombinant Protein.

Target Details

Target:	SMAD3
Alternative Name:	SMAD3 (SMAD3 Products)
Background:	Full Gene Name: SMAD family member 3 Synonyms: DKFZp586N0721,DKFZp686J10186,HSPC193,HsT17436,JV15-2,MADH3,MGC60396
Gene ID:	4088
NCBI Accession:	NM_005902
Pathways:	Cell Division Cycle , Chromatin Binding , Cell-Cell Junction Organization , Positive Regulation of Endopeptidase Activity , Autophagy

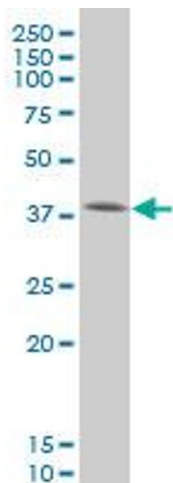
Application Details

Application Notes:	Optimal working dilution should be determined by the investigator.
Restrictions:	For Research Use only

Handling

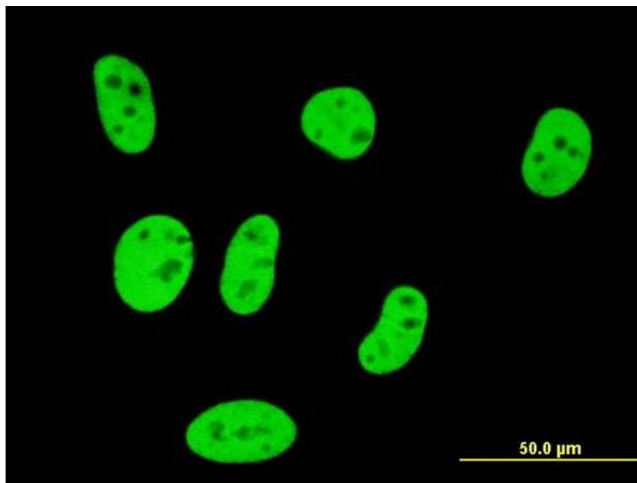
Buffer:	In 1x PBS, pH 7.4
Handling Advice:	Aliquot to avoid repeated freezing and thawing.
Storage:	-20 °C
Storage Comment:	Store at -20°C or lower. Aliquot to avoid repeated freezing and thawing.

Images



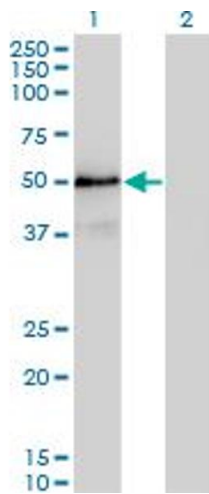
Western Blotting

Image 1. SMAD3 monoclonal antibody (M20), clone 4F9
Western Blot analysis of SMAD3 expression in HeLa .



Immunofluorescence

Image 2. Immunofluorescence of monoclonal antibody to SMAD3 on HeLa cell. [antibody concentration 10 ug/ml]



Western Blotting

Image 3. Western Blot analysis of SMAD3 expression in transfected 293T cell line by SMAD3 monoclonal antibody (M20), clone 4F9.

Lane 1: SMAD3 transfected lysate(48 KDa).

Lane 2: Non-transfected lysate.

Please check the [product details page](#) for more images. Overall 4 images are available for ABIN517627.