



[Go to Product page](#)

Datasheet for ABIN517658  
**anti-SMAD6 antibody (AA 285-384)**

4 Images

Overview

Quantity:	100 µg
Target:	SMAD6
Binding Specificity:	AA 285-384
Reactivity:	Human
Host:	Mouse
Clonality:	Monoclonal
Conjugate:	This SMAD6 antibody is un-conjugated
Application:	Western Blotting (WB), ELISA, Immunohistochemistry (Paraffin-embedded Sections) (IHC (p))

Product Details

Purpose:	Mouse monoclonal antibody raised against a partial recombinant SMAD6.
Immunogen:	SMAD6 (NP_005576, 285 a.a. ~ 384 a.a) partial recombinant protein with GST tag. MW of the GST tag alone is 26 KDa.
Sequence:	RDEYKPLDLS DSTLSYTETE ATNSLITAPG EFSNASMSPD ATKPSHWCSV AYWEHRTRVG RLYAVYDQAV SIFYDLPQGS GFCLGQLNLE QRSESVRTR
Clone:	1G2
Isotype:	IgG2a
Cross-Reactivity:	Human
Characteristics:	Antibody Reactive Against Recombinant Protein.

## Target Details

Target:	SMAD6
Alternative Name:	SMAD6 ( <a href="#">SMAD6 Products</a> )
Background:	Full Gene Name: SMAD family member 6 Synonyms: HsT17432,MADH6,MADH7
Gene ID:	4091
NCBI Accession:	<a href="#">NM_005585</a>
Pathways:	<a href="#">Chromatin Binding</a>

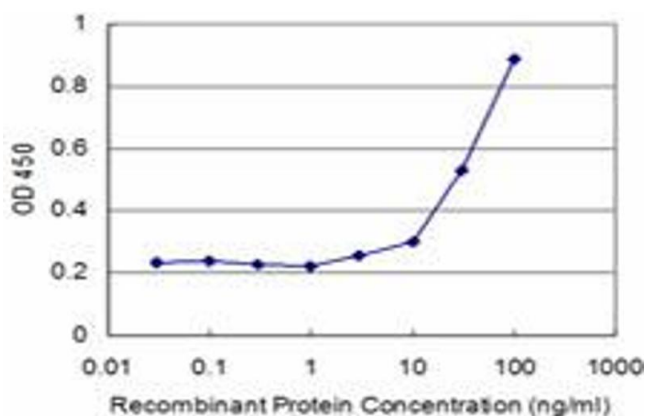
## Application Details

Application Notes:	Optimal working dilution should be determined by the investigator.
Restrictions:	For Research Use only

## Handling

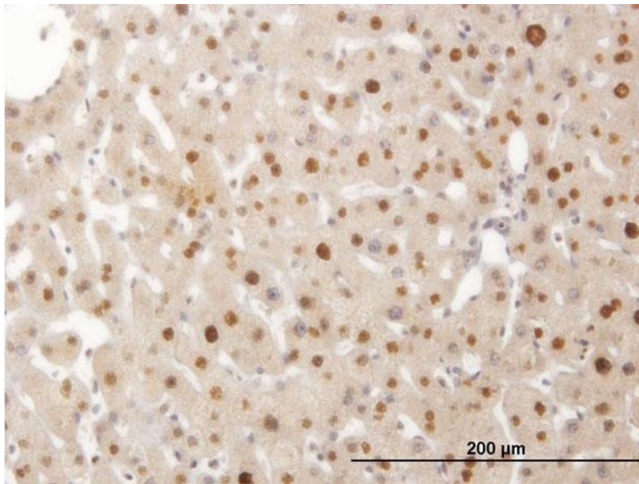
Buffer:	In 1x PBS, pH 7.4
Handling Advice:	Aliquot to avoid repeated freezing and thawing.
Storage:	-20 °C
Storage Comment:	Store at -20°C or lower. Aliquot to avoid repeated freezing and thawing.

## Images



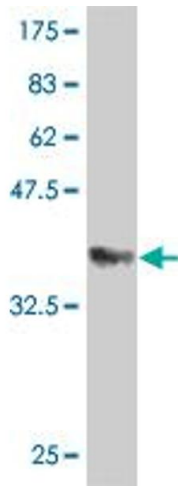
### ELISA

**Image 1.** Detection limit for recombinant GST tagged SMAD6 is approximately 3ng/ml as a capture antibody.



### Immunostaining

**Image 2.** Immunoperoxidase of monoclonal antibody to SMAD6 on formalin-fixed paraffin-embedded human liver. [antibody concentration 3 ug/ml]



### Western Blotting

**Image 3.** Western Blot detection against Immunogen (36.74 kDa).

Please check the [product details page](#) for more images. Overall 4 images are available for ABIN517658.