



[Go to Product page](#)

Datasheet for ABIN517673  
**anti-SMAD9 antibody (AA 1-225)**

1 Image

Overview

Quantity:	100 µg
Target:	SMAD9
Binding Specificity:	AA 1-225
Reactivity:	Human
Host:	Rabbit
Clonality:	Polyclonal
Conjugate:	This SMAD9 antibody is un-conjugated
Application:	Western Blotting (WB)

Product Details

Purpose:	Rabbit polyclonal antibody raised against a full-length human SMAD9 protein.
Immunogen:	SMAD9 (AAH67766.1, 1 a.a. ~ 225 a.a) full-length human protein.
Sequence:	MHSTTPISSL FSFTSPAVKR LLGWKQGDEE EKWAEKAVDS LVKCLKKKKG AMDELERALS CPGQPSKCVT IPGSLDGRLQ VSHRKGLPHV IYCRVWRWPD LQSHHELKPL ECCEFPFGSK QKEVCINPYH YRRVETPVL PVLVPRHSEY NPQLSLLAKF RSASLHSEPL MPH NATYPDS FQQPPCSALP PPSHAFSQS PCTASYPHSP GSPSEPESPY QHSDF
Cross-Reactivity:	Human
Characteristics:	Antibody reactive against mammalian transfected lysate.

Target Details

Target:	SMAD9
---------	-------

## Target Details

Alternative Name:	SMAD9 ( <a href="#">SMAD9 Products</a> )
Background:	Full Gene Name: SMAD family member 9 Synonyms: MADH6,MADH9,SMAD8A,SMAD8B
Gene ID:	4093

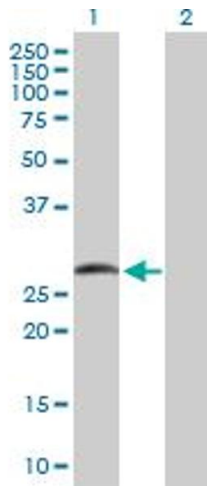
## Application Details

Application Notes:	Optimal working dilution should be determined by the investigator.
Restrictions:	For Research Use only

## Handling

Buffer:	In 1x PBS, pH 7.4
Handling Advice:	Aliquot to avoid repeated freezing and thawing.
Storage:	-20 °C
Storage Comment:	Store at -20°C or lower. Aliquot to avoid repeated freezing and thawing.

## Images



### Western Blotting

**Image 1.** Western Blot analysis of SMAD9 expression in transfected 293T cell line by SMAD9 MaxPab polyclonal antibody.

Lane 1: SMAD9 transfected lysate(25.30 KDa).

Lane 2: Non-transfected lysate.