

Datasheet for ABIN517769
anti-MCC antibody (AA 1-829)



[Go to Product page](#)

1 Image

Overview

Quantity:	50 µL
Target:	MCC
Binding Specificity:	AA 1-829
Reactivity:	Human
Host:	Mouse
Clonality:	Polyclonal
Conjugate:	This MCC antibody is un-conjugated
Application:	Western Blotting (WB)

Product Details

Purpose:	Mouse polyclonal antibody raised against a full-length human MCC protein.
Immunogen:	MCC (NP_002378, 1 a.a. ~ 829 a.a) full-length human protein.
Sequence:	MNSGVAMKYG NDSSAELSEL HSAALASLKG DIVELNKRLQ QTERERDLLE KKLAKAQCEQ SHLMREHEDV QERTTLRYEE RITELHSVIA ELNKKIDRLQ GTTIREEDEY SELRSELSQS QHEVNEDSRS MDQDQTSVSI PENQSTMVTA DMDNCSDLNS ELQRVLTGLE NVVCGRRKSS CSLSVAEVDR HIEQLTTASE HCDLAIKTVE EIEGVLGRDL YPNLAEERSR WEKELAGLRE ENESLTAMLC SKEEELNRK ATMNAIREER DRLRRRVREL QTRLQSVQAT GPSSPGRLTS TNRPINPSTG ELSTSSSSND IPIAKIAERV KLSKTRSESS SDRPVLGSE ISSIGVSSSV AEHLAHS LQD CSNIQEIFQT LYSHGSAISE SKIREFEVET ERLNSRIEHL KSQNDLLTIT LEECKSNAER MSMLVGKYES NATALRLALQ YSEQCIEAYE LLLALAESEQ SLILGQFRAA GVGSSPGDQS GDENITQMLK RAHDCRKTAE NAAKALLMKL DGSCGGAFV AGCSVQPWES LSSNSHTSTT SSTASSCDTE FTKEDEQLK DYIQLKNDR AAVKLTMLEL ESIHIDPLSY

Product Details

DVKPRGDSQR LDLENAVLMQ ELMAMKEEMA ELKAQLYLLE KEKKALELKL STREAQEQAY
LVHIEHLKSE VEEQKEQRM R SLSSTSSGSK DKPGKECADA ASPALSLAEL RTTCSENELA
AEFTNAIRRE KKLKARVQEL VSALERLTKS SEIRHQQSAE FVNDLKTRANS NLVAAYEKAK
KKHQNKLLKL ESQMMAMVER HETQVRMLKQ RIALLEEENS RPHTNETSL

Cross-Reactivity: Human

Characteristics: Antibody reactive against mammalian transfected lysate.

Target Details

Target: MCC

Alternative Name: MCC ([MCC Products](#))

Background: Full Gene Name: mutated in colorectal cancers
Synonyms: DKFZp76201615,FLJ38893,FLJ46755,MCC1

Gene ID: 4163

NCBI Accession: [NM_002387](#)

Application Details

Application Notes: Optimal working dilution should be determined by the investigator.

Restrictions: For Research Use only

Handling

Format: Liquid

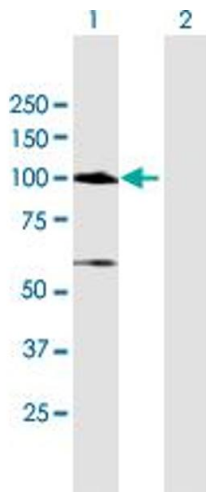
Buffer: No additive

Preservative: Without preservative

Handling Advice: Aliquot to avoid repeated freezing and thawing.

Storage: -20 °C

Storage Comment: Store at -20°C or lower. Aliquot to avoid repeated freezing and thawing.



Western Blotting

Image 1. Western Blot analysis of MCC expression in transfected 293T cell line by MCC MaxPab polyclonal antibody.

Lane1:MCC transfected lysate(91.19 KDa).

Lane2:Non-transfected lysate.