

Datasheet for ABIN517791  
**anti-SMCP antibody (AA 1-116)**[Go to Product page](#)

## 1 Image

## Overview

Quantity:	200 µL
Target:	SMCP
Binding Specificity:	AA 1-116
Reactivity:	Human
Host:	Mouse
Clonality:	Monoclonal
Conjugate:	This SMCP antibody is un-conjugated
Application:	ELISA, Western Blotting (WB)

## Product Details

Purpose:	Mouse monoclonal antibody raised against a full-length recombinant SMCP.
Immunogen:	SMCP (AAH14593, 1 a.a. ~ 116 a.a) full-length recombinant protein with GST tag. MW of the GST tag alone is 26 KDa.
Sequence:	MCDQTKHSKC CPAKGNQCCP PQQNQCCQSK GNQCCPPKQN QCCQPKGSQC CPPKHNHCCQ PKPPCCIQR CCGLETKEPV SPLNMESEPN SPQTQDKGCQ TQQPHSPQN ESRPSK
Clone:	4F4
Isotype:	IgG2a kappa
Cross-Reactivity:	Human

## Target Details

Target:	SMCP
Alternative Name:	SMCP ( <a href="#">SMCP Products</a> )
Background:	Full Gene Name: sperm mitochondria-associated cysteine-rich protein Synonyms: HSMCSGEN1,MCS,MCSP,MGC26305,MGC26519
Gene ID:	4184

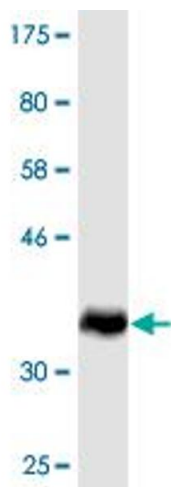
## Application Details

Application Notes:	Optimal working dilution should be determined by the investigator.
Comment:	Product Quality tested by: Antibody Reactive Against Recombinant Protein.
Restrictions:	For Research Use only

## Handling

Format:	Liquid
Buffer:	In ascites fluid
Handling Advice:	Aliquot to avoid repeated freezing and thawing.
Storage:	-20 °C
Storage Comment:	Store at -20°C or lower. Aliquot to avoid repeated freezing and thawing.

## Images



**Western Blotting**

**Image 1.** Western Blot detection against Immunogen (38.5 KDa) .