



[Go to Product page](#)

Datasheet for ABIN517798
anti-MDH2 antibody (AA 134-246)

1 Image

Overview

Quantity:	100 µg
Target:	MDH2
Binding Specificity:	AA 134-246
Reactivity:	Human
Host:	Mouse
Clonality:	Monoclonal
Conjugate:	This MDH2 antibody is un-conjugated
Application:	ELISA

Product Details

Purpose:	Mouse monoclonal antibody raised against a partial recombinant MDH2.
Immunogen:	MDH2 (NP_005909, 134 a.a. ~ 246 a.a) partial recombinant protein with GST tag. MW of the GST tag alone is 26 KDa.
Sequence:	EAMICVIANP VNSTIPITAE VFKKHGVYNP NKIFGVTTLD IVRANTFVAE LKGLDPARVN VPVIGGHAGK TIPLISQCT PKVDFPQDQL TALTGRIQEA GTEVVKAKAG AGS
Clone:	2D9
Isotype:	IgG2b
Cross-Reactivity:	Human
Characteristics:	Antibody Reactive Against Recombinant Protein.

Target Details

Target:	MDH2
Alternative Name:	MDH2 (MDH2 Products)
Background:	Full Gene Name: malate dehydrogenase 2, NAD (mitochondrial) Synonyms: M-MDH,MDH,MGC:3559,MOR1
Gene ID:	4191
NCBI Accession:	NM_005918

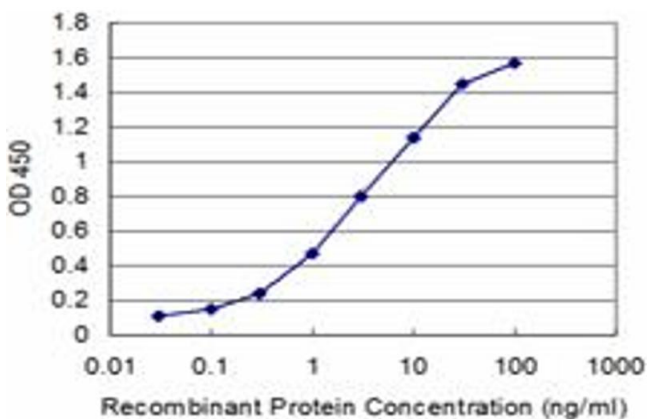
Application Details

Application Notes:	Optimal working dilution should be determined by the investigator.
Restrictions:	For Research Use only

Handling

Buffer:	In 1x PBS, pH 7.4
Handling Advice:	Aliquot to avoid repeated freezing and thawing.
Storage:	-20 °C
Storage Comment:	Store at -20°C or lower. Aliquot to avoid repeated freezing and thawing.

Images



ELISA

Image 1. Detection limit for recombinant GST tagged MDH2 is approximately 0.1 ng/ml as a capture antibody.